



### 6C Hackett Terrace Marryatville SA

4 2 2

Whether you're obsessed with gorgeous free-flowing design or have a penchant for a prestigious, convenient postcode, 6C Hackett Terrace will undoubtedly catch your eye. From the bold, contemporary façade to the statement-making floorplan, elite eastern suburb builders Nobel Built have created nothing short of a suburban masterpiece.

Brand new and created to a high-design ethic, it's just waiting for new occupants to take advantage of the four bedrooms, two bathrooms and modern high-quality selections. And it won't be waiting long, because family homes sitting in a top school zone, surrounded by million-dollar properties, don't stick around.

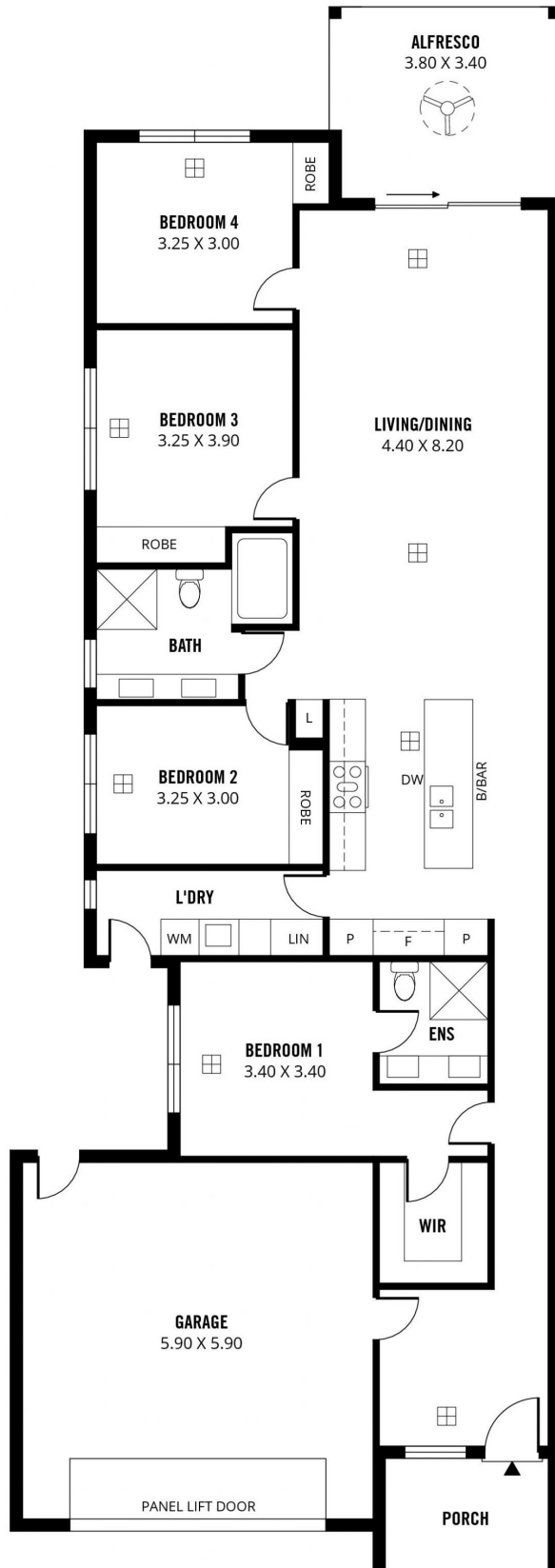
Consider these luxurious attributes:

- High-end kitchen with SMEG appliances, masses of

**Price** : \$ 778,000  
**Building Size** : 211 sqm  
**Land Size** : 253 sqm  
**View** : <https://www.sinova.com.au/sale/sa/eastern-suburbs/marryatville/residential/house/5770374>



**Stephen Ong**  
08 7080 5884



**211m<sup>2</sup>**

**TOTAL**

154m<sup>2</sup>

Living

13m<sup>2</sup>

Alfresco

38m<sup>2</sup>

Garage

6m<sup>2</sup>

Porch

Scale in metres. This drawing is for illustration purposes only. All measurements are approximate and details intended to be relied upon should be independently verified.

Produced by **The Fotobase Group**