



### 10 Kudlyo Close New Port SA

3 2 2

Here we have one for the comfort lovers, the holiday makers, the busy corporates or the families chasing a convenient urban lifestyle. Here we have 10 Kudlyo Close, an immaculate Torrens titled townhouse oozing modern style, charm and irresistible 'lock-and-leave' capabilities.

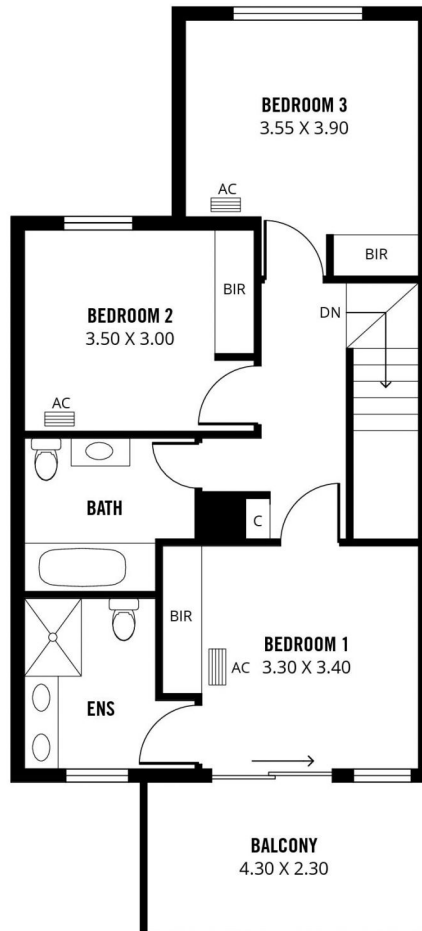
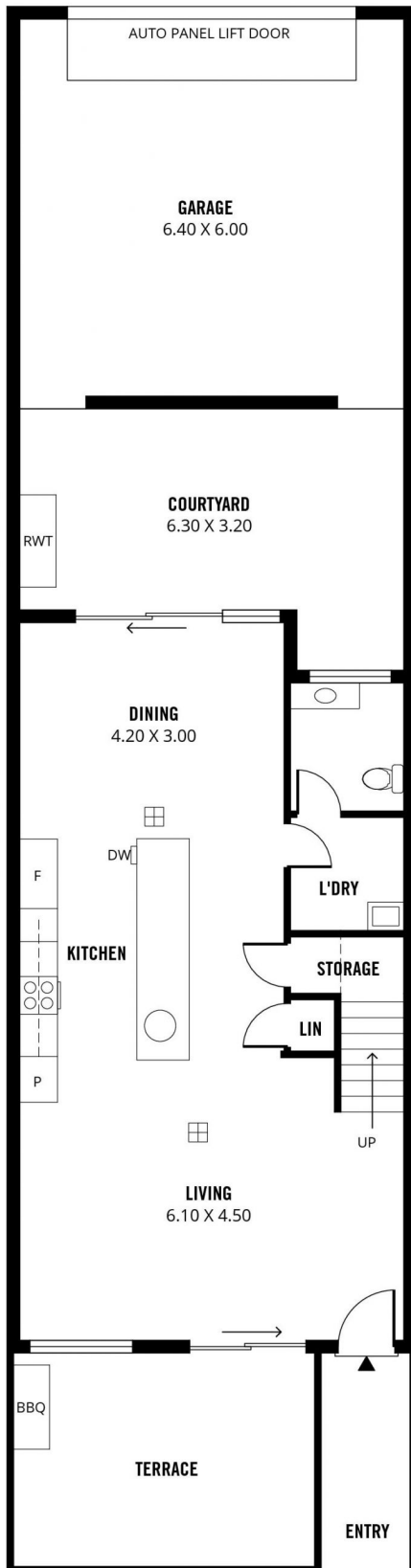
Functional at heart with a minimal flair, it offers 225sqm of space spread over two levels. The ground floor is accessed from the front via an eye-catching terrace, perfect for BBQ's; or through the double remote garage at the back. Bathed in natural light, the open plan kitchen, dining and living area illustrates forward-thinking design. Here glass sliding doors to the courtyard and terrace create the indoor-outdoor lifestyle feel we love in Australia.

Upstairs are the three surprisingly large bedrooms, all carpeted, and with built-in-robos. The master suite is the

**Price** : \$ 500,000  
**Building Size** : 225 sqm  
**View** : <https://www.sinova.com.au/sale/sa/western-beachside-suburbs/new-port/residential/house/5770375>



**Stephen Ong**  
**08 7080 5884**



**225m<sup>2</sup>**

**TOTAL**

142m<sup>2</sup>

Living

20m<sup>2</sup>

Courtyard

38m<sup>2</sup>

Garage

6m<sup>2</sup>

Porch

10m<sup>2</sup>

Balcony

9m<sup>2</sup>

Terrace

Scale in metres. This drawing is for illustration purposes only. All measurements are approximate and details intended to be relied upon should be independently verified.

Produced by **The Fotobase Group**