



75 Maple Avenue Rostrevor SA

3 1 3

A solid dependable home is a big 'tick' off the list when it comes to caring for your family. You want them to be comfortable? and homes don't come more homely and reliable than 75 Maple Avenue in Rostrevor.

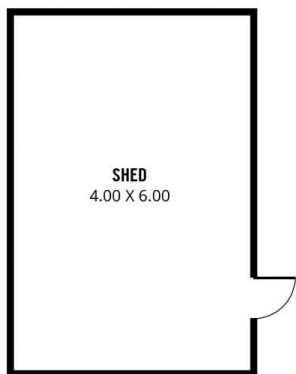
Built on an approx. 594 sqm flat block with 24.38m wide frontage appeal, this home presents you with three bedrooms, multiple living areas and extensive covered outdoor areas. Its sublime street appeal ensures you'll be captivated from the moment you arrive.

A wide carport offers covered parking for three vehicles, while the covered front verandah gives you access to the home. Once inside the scope and extent of the thorough renovation becomes apparent. From fresh paint everywhere to new carpets in the bedrooms, the presentation is as good as new.

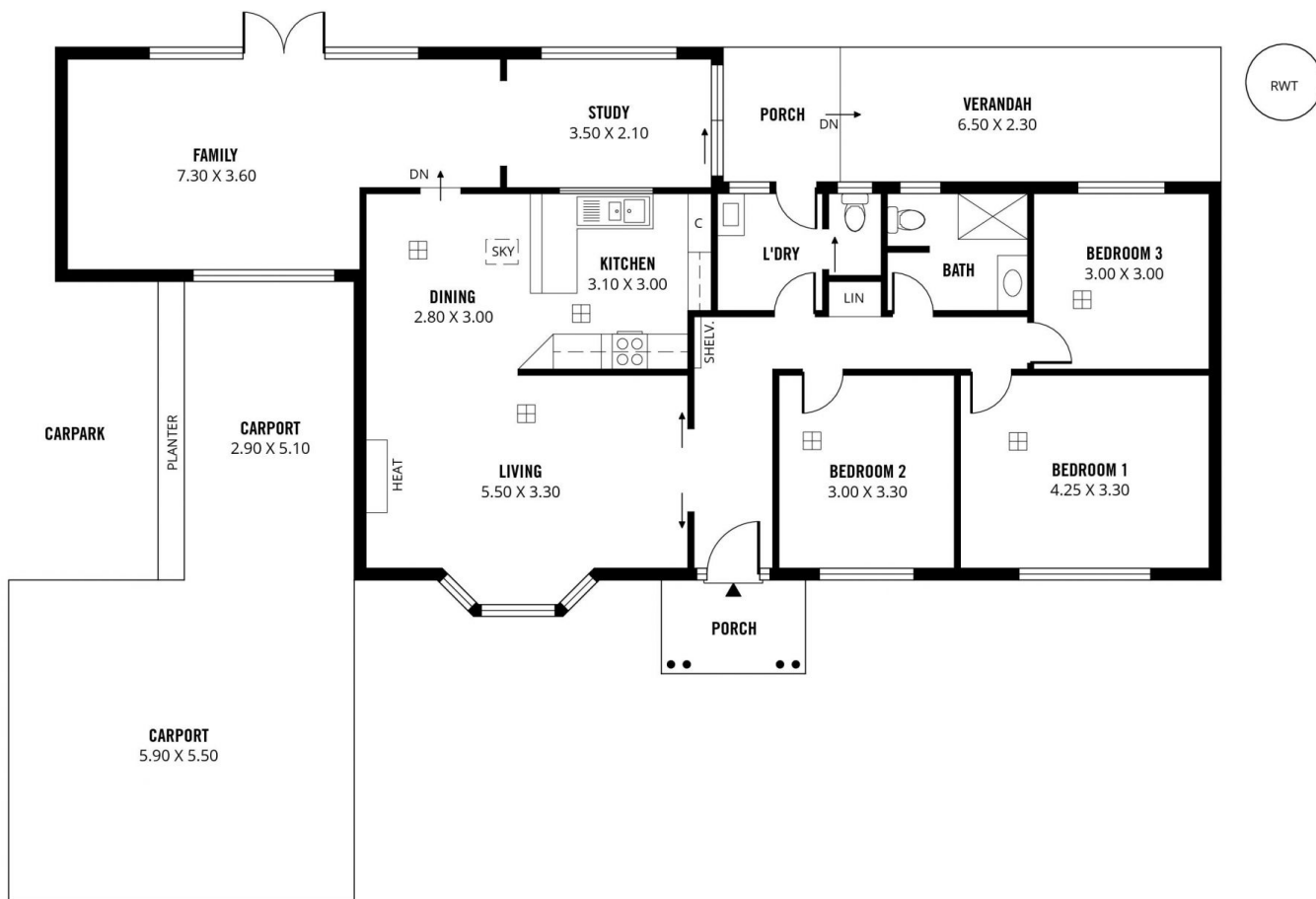
Price : \$ 528,000
Land Size : 594 sqm
View : <https://www.sinova.com.au/sale/sa/eastern-suburbs/rostrrevor/residential/house/5770379>



Stephen Ong
08 7080 5884



SHED
4.00 X 6.00



244m²

TOTAL

137m²

Living

24m²

Shed

59m²

Carport

9m²

Porch

15m²

Verandah

Scale in metres. This drawing is for illustration purposes only. All measurements are approximate and details intended to be relied upon should be independently verified.

Produced by The Fotobase Group