



6 Windarra Court Belair SA

4 2 4

Best Offer by 2nd October, 4pm (Unless Sold Prior)

Do you need a life that's worlds away from the concrete expanses of the city, yet close enough to commute? Where you wake up to the sound of the kookaburra and end the day with the sun setting through the trees? It's time to stop searching, because 6 Windarra Court is a family haven that'll impress you no end.

Located at the end of a quiet cul-de-sac, the peaceful serenity on offer here is evident from the second you arrive, with the exposed brick façade and the timber tones blend effortlessly into the surrounding native flora.

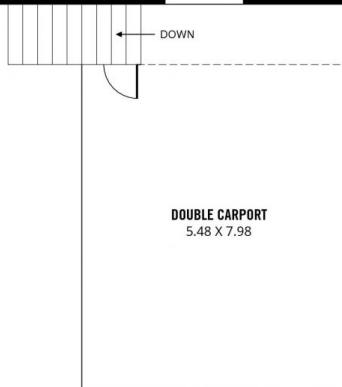
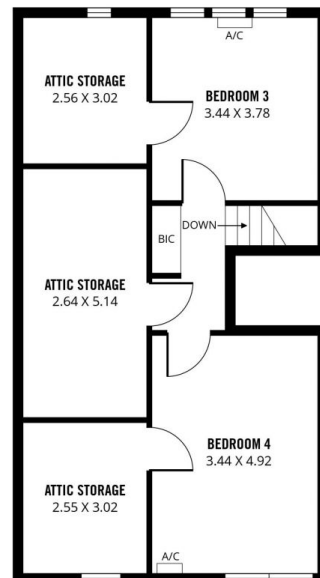
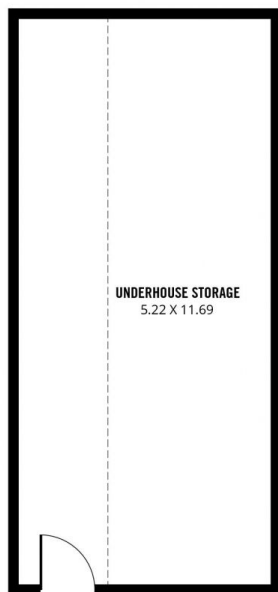
A wide driveway leads to the highset home, which has a dual-car carport, two levels and under-house storage. The top level has two bedrooms, plus three attic rooms that are

Price : \$ 625,000
Building Size : 322 sqm
Land Size : 990 sqm
View : <https://www.sinova.com.au/sale/sa/south-south-east-suburbs/belair/residential/house/5770381>



Stephen Ong
08 7080 5884

<https://www.sinova.com.au>



322m²

277m²

44m²

1m²

TOTAL

Living

Carport

Porch

Scale in metres. This drawing is for illustration purposes only. All measurements are approximate and details intended to be relied upon should be independently verified.

Produced by The Fotobase Group