



6 Hackett Terrace Marryatville SA

4 3 1

BOTH 6 & 6A SOLD!

Exquisite mastery of construction meets tasteful design and high-level finishes in this Marryatville work of art. This is a true home for the ages, a timeless classic incorporating comfort, style and functionality in one luxurious package. A 4-bedroom, 3-bathroom million-dollar home that is gracefully spacious, yet sublimely beautiful. Welcome to 6 and 6A Hackett Terrace.

Perhaps the most startlingly audacious thing about this home is the custom floor plan that includes not one but two master bedrooms. Upstairs and downstairs each host their own master, complete with generous walk-in-robos and deluxe ensuite bathrooms. A truly progressive concept that

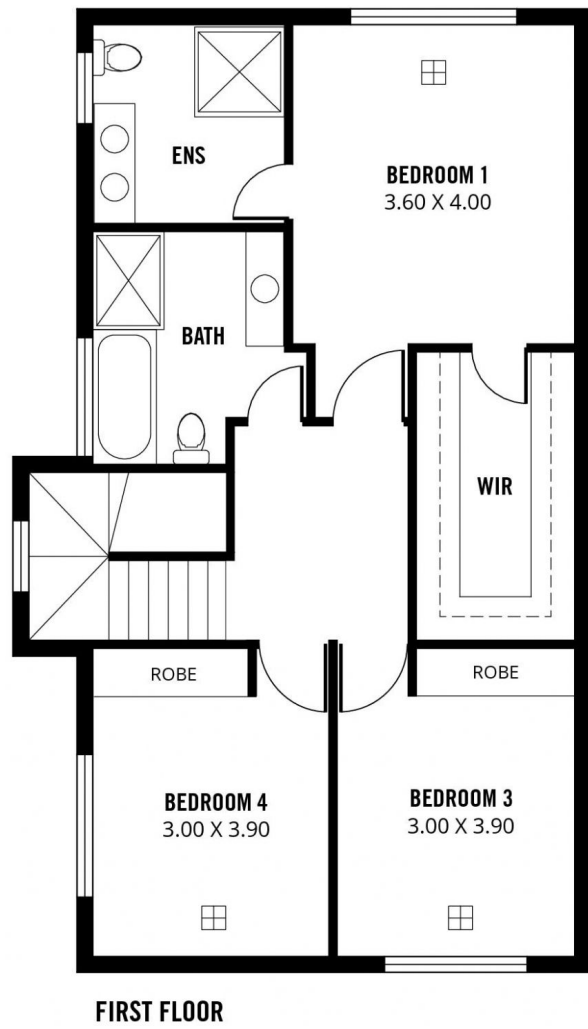
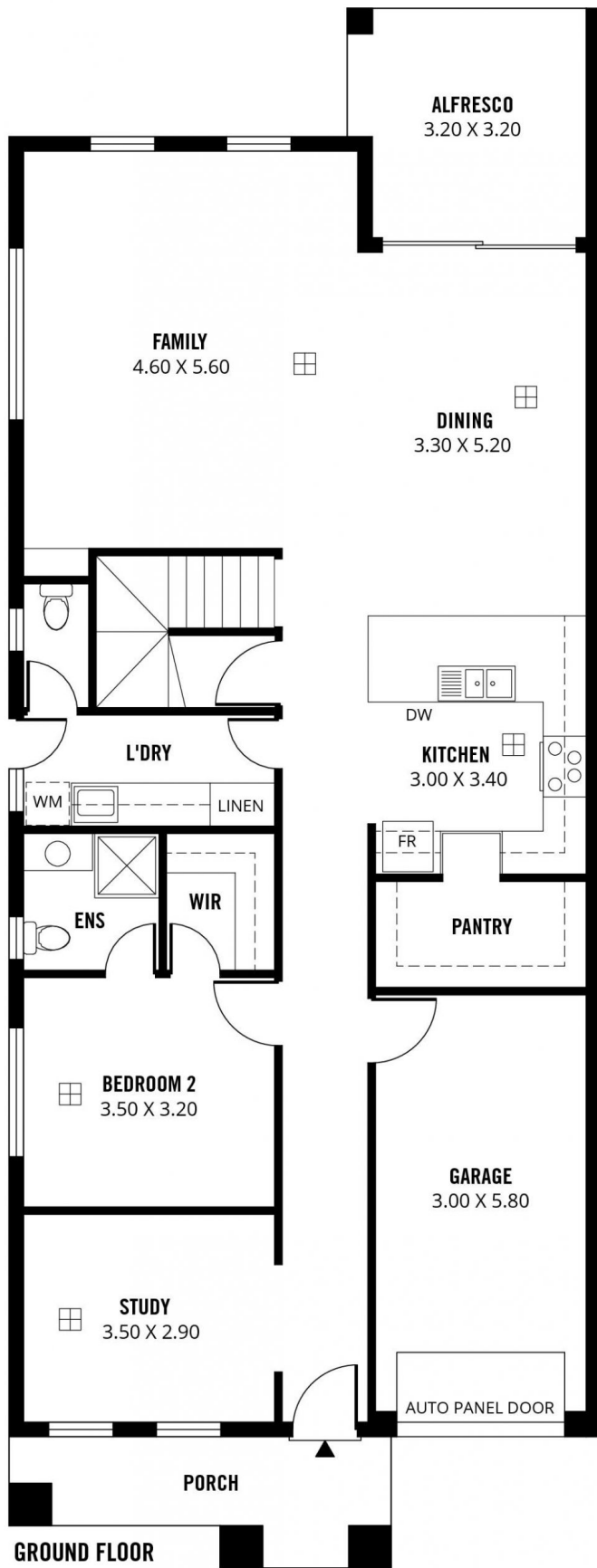
[For full version visit the website](https://www.sinova.com.au)

Type : House
Price : \$ 990,000
Building Size : 245 sqm
View : <https://www.sinova.com.au/sale/sa/eastern-suburbs/marryatville/residential/house/5770397>



Stephen Ong
08 7080 5884

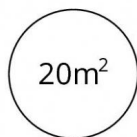
<https://www.sinova.com.au>



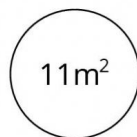
TOTAL



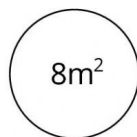
Living



Garage



Alfresco



Porch

Scale in metres. This drawing is for illustration purposes only. All measurements are approximate and details intended to be relied upon should be independently verified.

Produced by **The Fotobase Group**