



### 13 Rothbury Avenue Heathpool SA

4 2 4

#### Exceptional Grand Tudor Residence

A breathtaking grand Tudor residence, seamlessly integrating modern finishes and the latest features with the charm and original of yesteryear. Beautifully updated to cater to every comfort, 13 Rothbury exudes modern elegance, historical charm and extreme luxury. Prepare to be blown away.

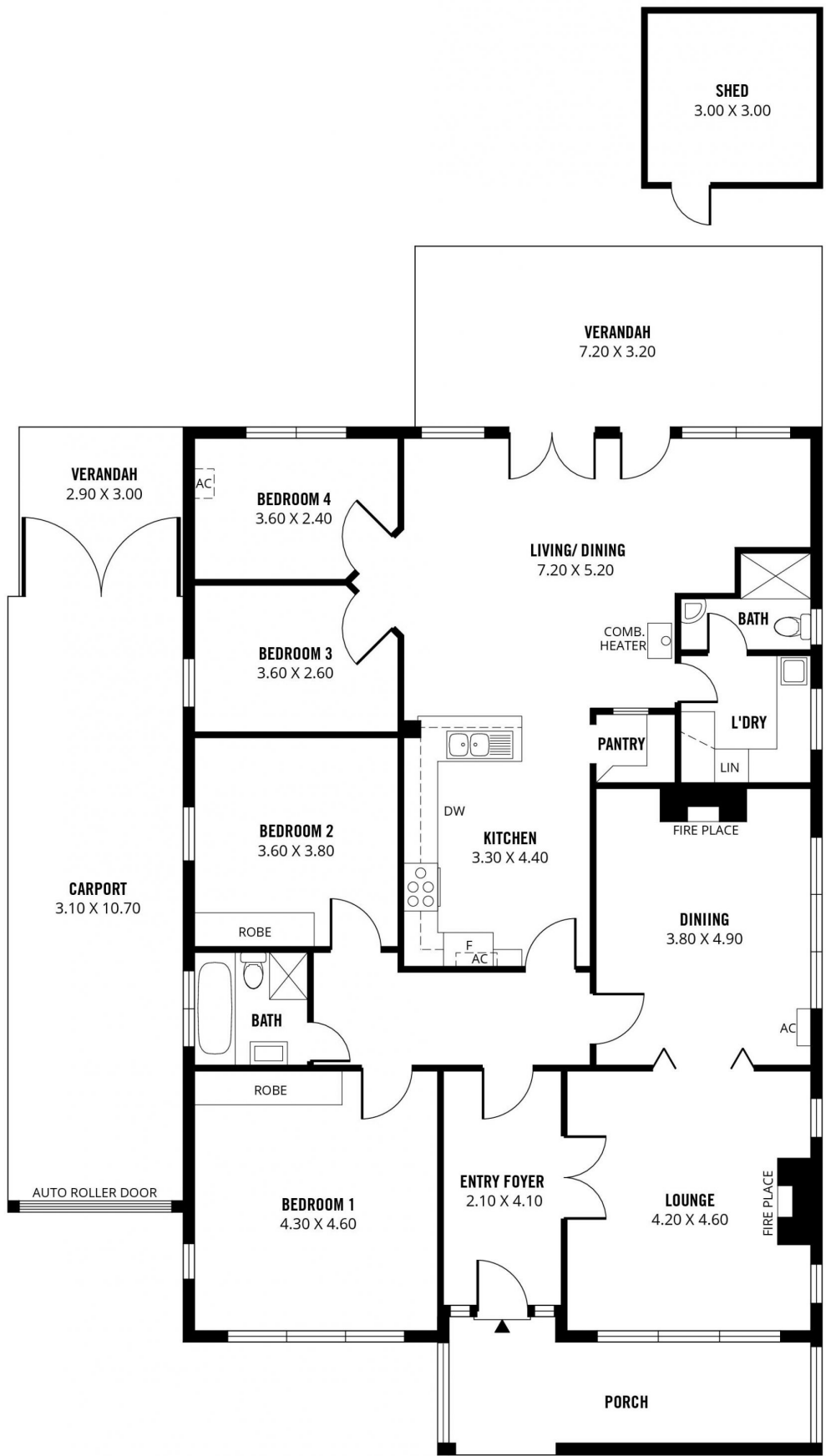
Built from solid brick and sitting on an approx. 739sqm block in a tranquil beautiful tree-lined street, this handsome residence impresses from the minute you arrive. The original façade has been retained and maintained to perfection, complemented by a perfectly kept front-garden, long driveway and covered front porch.

Indoors and the unique, generous floorplan encompasses

**Price** : \$ 1,147,000  
**Building Size** : 272 sqm  
**Land Size** : 739 sqm  
**View** : <https://www.sinova.com.au/sale/sa/east-ern-suburbs/heathpool/residential/house/5770403>



**Stephen Ong**  
08 7080 5884



Scale in metres. This drawing is for illustration purposes only. All measurements are approximate and details intended to be relied upon should be independently verified. Produced by The Fotobase Group