



## 12 Courtabie Avenue Rostrevor SA

4 3 2

A brand new custom-designed masterpiece built to stand the test of time; this family home combines forward-thinking design with expert construction. The result? A deliberately elegant, generosity-infused home that's remarkably ahead of its time. Welcome to 12 Courtabie Avenue in Rostrevor.

Upon arrival the bold façade hints at the masses of natural light permeating through the interior. The clever interplay of glass, render and contemporary lines inspires and delights, setting the tone for the rest of the property.

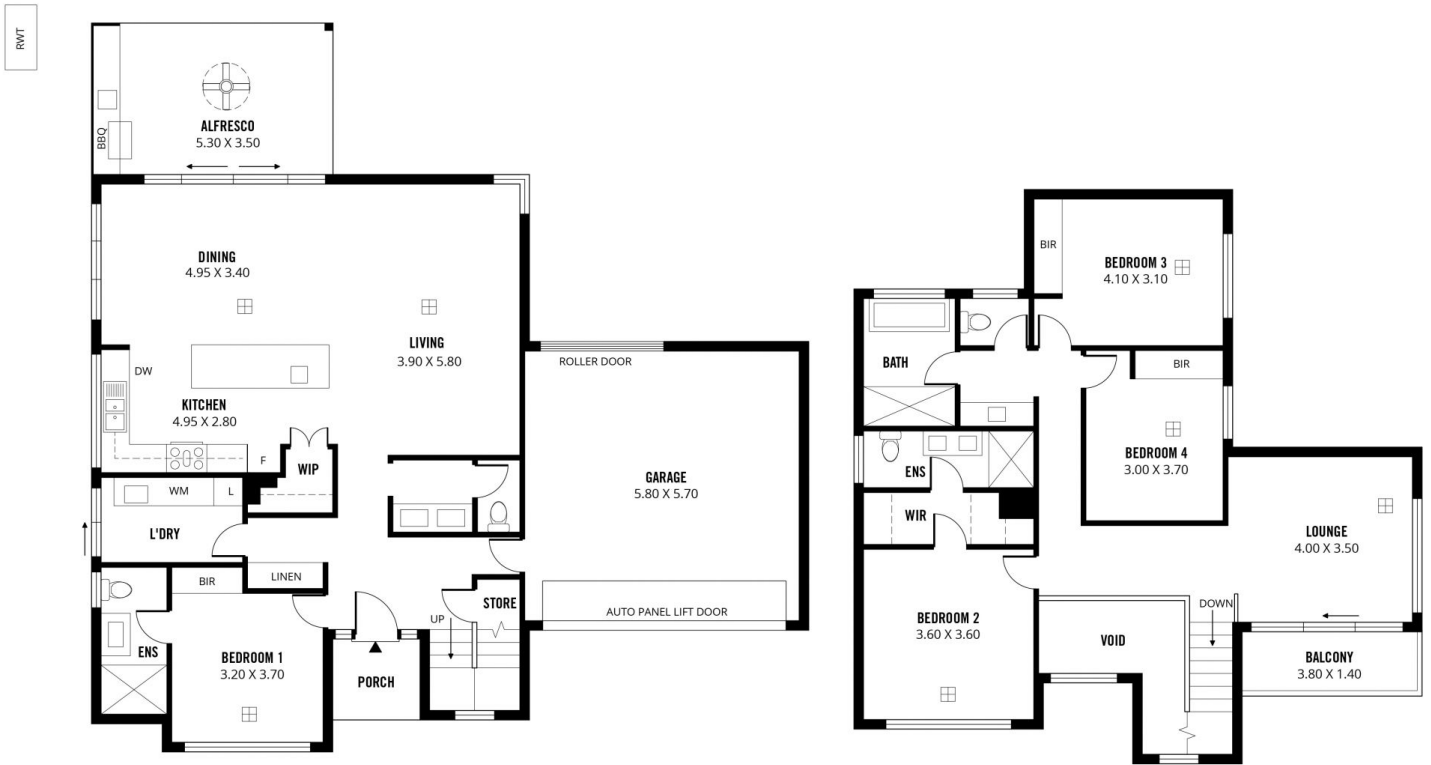
Access to the lower level is via the front porch or the double remote lockup garage, where a wide welcoming area with an expansive void greets you.

You're guided from there to the immense open-plan kitchen, living and dining area, where the feeling of spatial abundance is matched by the high-class fixtures and the

**Price** : \$ 875,000  
**Building Size** : 278 sqm  
**Land Size** : 368 sqm  
**View** : <https://www.sinova.com.au/sale/sa/eastern-suburbs/rostrrevor/residential/house/5770407>



**Stephen Ong**  
08 7080 5884



Scale in metres. This drawing is for illustration purposes only. All measurements are approximate and details intended to be relied upon should be independently verified.

Produced by The Fotobase Group