



24A Ferry Avenue Plympton Park SA

4 2 1

Prepare yourself for a masterclass in property luxury, a tour-de-force of elegance and liveability. This conscientiously designed home offers you the opportunity to upgrade your lifestyle and enjoy low-maintenance living surrounded by high-end inclusions. Welcome to 24A Ferry Avenue, a custom-designed Brand New Torrens Title Home that is destined to take your breath away.

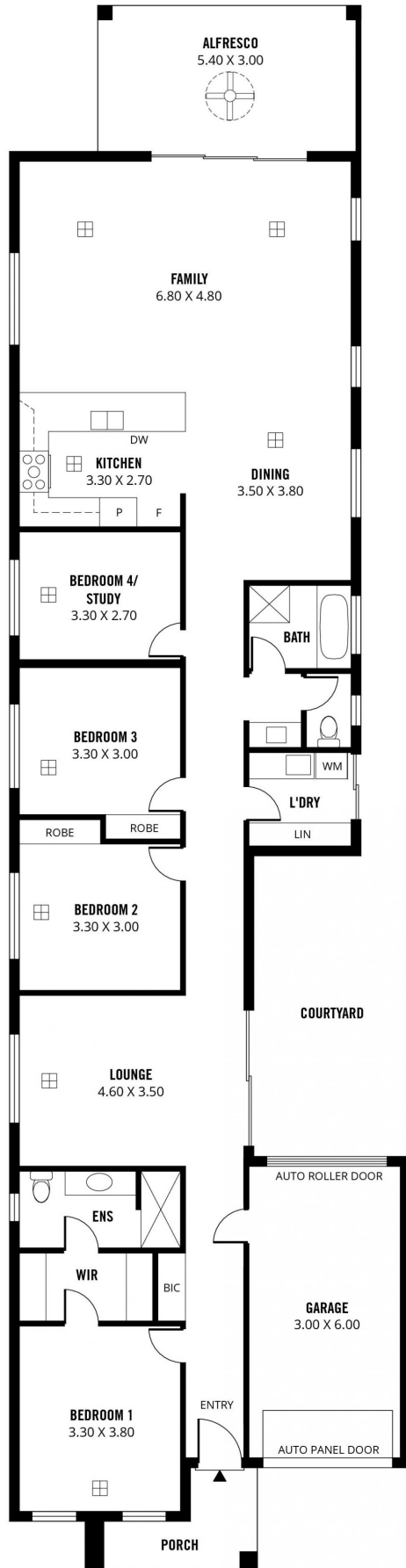
A feature metal fence with an electric gate and intercom subtly secures the front of the property. Behind it the green lawn and exposed brick and render façade combine for strong street appeal, enticing you indoors through either the 2.4-metre high main entrance or the single remote garage.

The 206m² footprint of the home incorporates three bedrooms, with a fourth that could also be used as a study.

Price : \$ 655,000
Building Size : 206 sqm
Land Size : 400 sqm
View : <https://www.sinova.com.au/sale/sa/south-south-east-suburbs/plympton-park/residential/house/5770412>



Stephen Ong
08 7080 5884



207m²

164m²

16m²

22m²

5m²

TOTAL

Living

Alfresco

Garage

Porch

Scale in metres. This drawing is for illustration purposes only. All measurements are approximate and details intended to be relied upon should be independently verified.

Produced by **The Fotobase Group**