



25 Adelaide Street Magill SA

5 2 2

Inspired design, conscientious architecture and an approx. 1013-sqm allotment have combined to create one of Adelaide's most desirable homes. This sleekly modern four/ five-bedroom masterpiece represents everything good about contemporary real estate. Expertly combining luxury, grace, high-end fittings and space - this is your chance to own a prominent property in a blue-chip suburb.

Proudly sitting on the high side of the road in one of Magill's premier pockets, this Georgian-style custom built home will have you transfixed from the moment you arrive. The bold façade and low maintenance front yard entice you through the 2.4-metre high front door. In the expansive entryway an immediate impression of style greets you.

Warm bamboo timber floors lead you past the generous front lounge on your left. The continuous flow of interior space takes you to the social centre of the home, the entertainers paradise - a beautiful open-plan family, dining

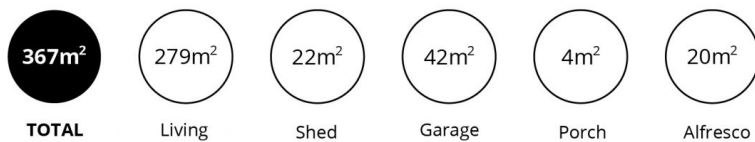
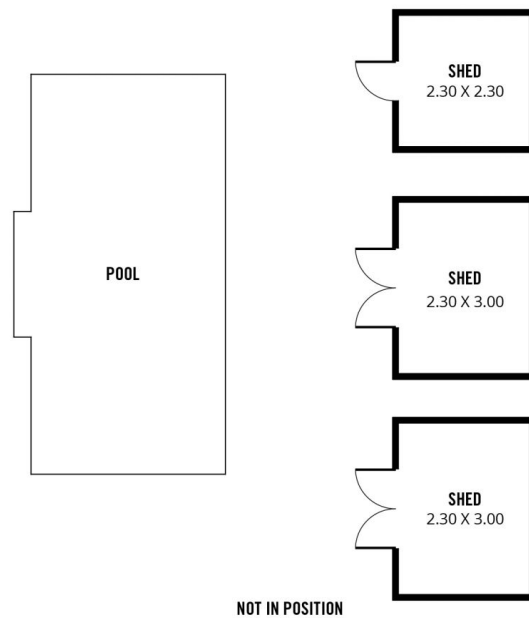
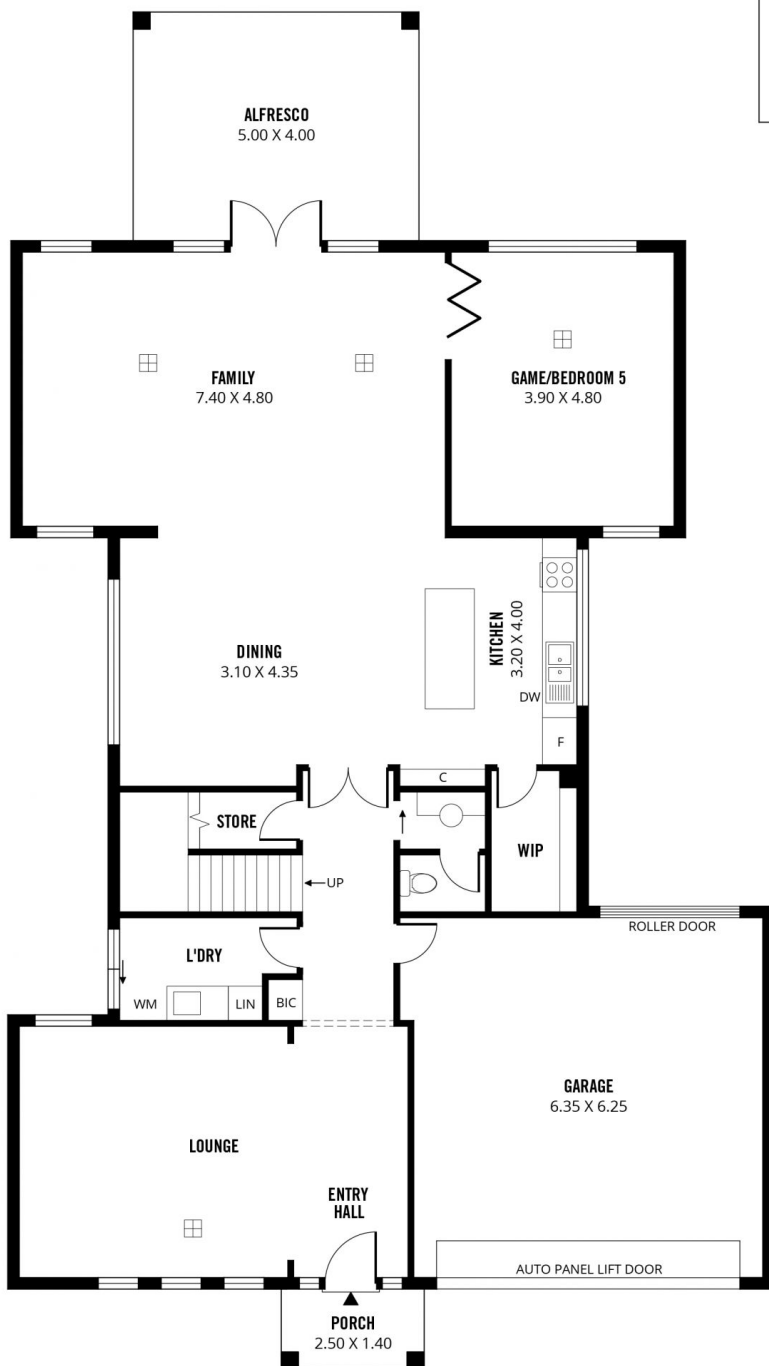
Price : \$ 1,200,000

Land Size : 1013 sqm

View : <https://www.sinova.com.au/sale/sa/eastern-suburbs/magill/residential/house/5770428>



Stephen Ong
08 7080 5884



Scale in metres. This drawing is for illustration purposes only. All measurements are approximate and details intended to be relied upon should be independently verified.

Produced by The Fotobase Group