



42/237 Wakefield Street Adelaide SA

2 1 1

This cleverly designed two storey loft apartment in the Adelaide CBD puts you in the heart of it all. Step out your front door into a melting pot of retail, restaurants and café culture, or stay home and enjoy the roomy comfort of a home that's extremely easy on the eye.

237 Wakefield Street is a large complex featuring an eye-catching exposed brick façade. It's massive central courtyard with lush flowerbeds and street lamps feels far removed from the bustle of the city.

Once inside number 42 the lofty ceilings and optimal use of space creates a luxurious haven. Open-plan living on the lower level incorporates a carpeted living area, a dining room and a well-appointed galley kitchen. Stainless steel appliances, including a dishwasher, are complemented by a movable kitchen bench which handily expands the work

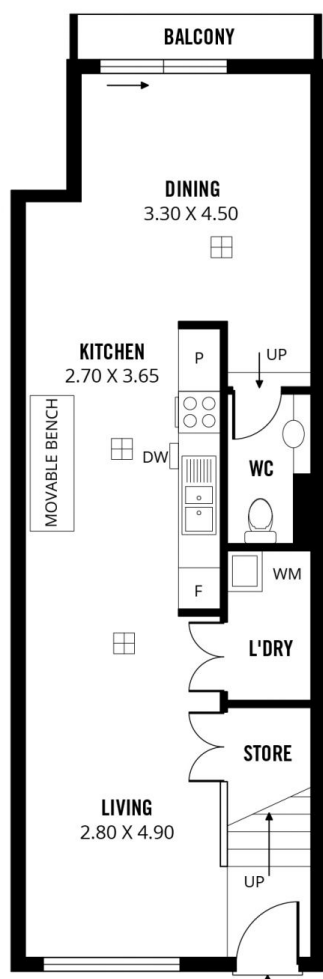
View : <https://www.sinova.com.au/sale/sa/adelaide/adelaide/residential/apartment/5770444>



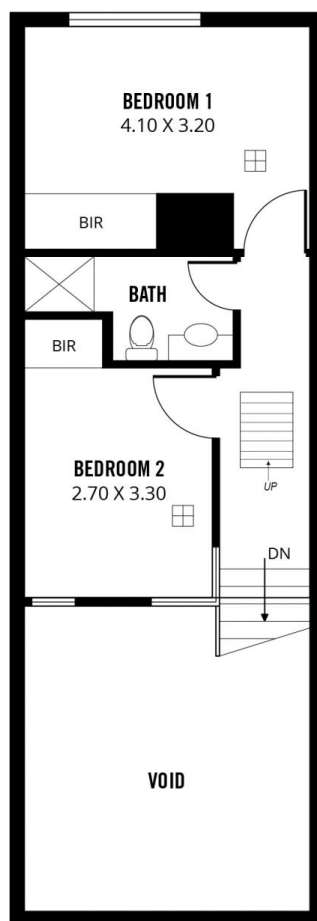
Sandra Huang
0499 016 881



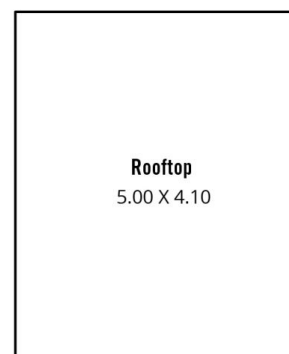
Stephen Ong
08 7080 5884



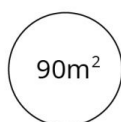
GROUND FLOOR



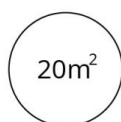
FIRST FLOOR



TOTAL



Living



Rooftop

Scale in metres. This drawing is for illustration purposes only. All measurements are approximate and details intended to be relied upon should be independently verified.

Produced by **The Fotobase Group**