



50 Wallis Street Parkside SA

3 1 2

A charming tribute to the positive attributes of yesteryear's architecture and design, this delightful 1900s symmetrical cottage is a feast for the senses.

Sitting on a large 465-sqm approx., sun-drenched block in one of the city's premium locations, there's immense potential to grow this into an impeccable family residence.

Out front an eye-catching porch with ornate cornices, stained glass feature windows and timber tones creates instant street appeal. Upon entry three-metre high ceilings instil a feeling of spatial excess, enhanced by the conscientious floor plan.

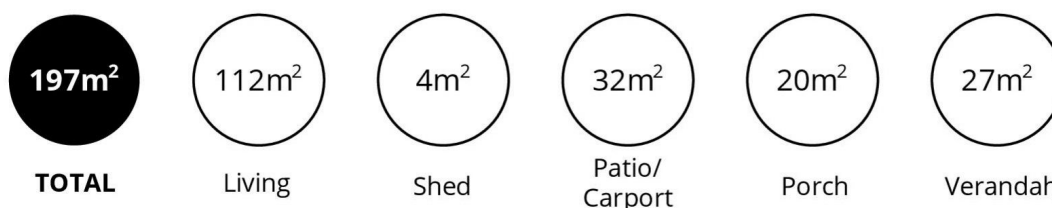
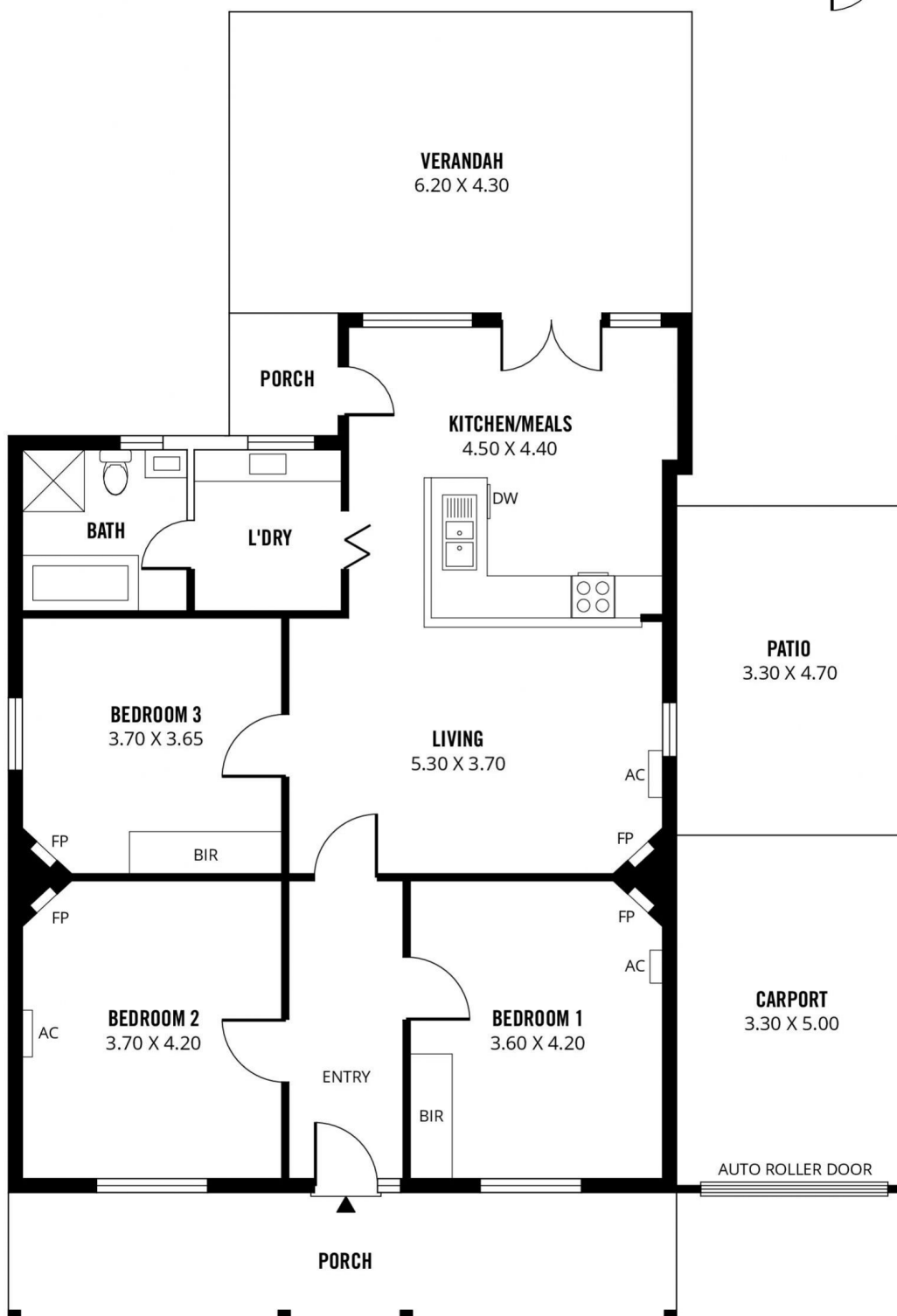
There's a sense of old-world elegance meeting modern flair, as the warm timber floors are offset perfectly by the crisp palette of the interior walls and updated modern

Price : \$ 774,500
Land Size : 465 sqm
View : <https://www.sinova.com.au/sale/sa/eastern-suburbs/parkside/residential/house/5770450>



Stephen Ong
08 7080 5884

SHED
2.40 X 1.60



Scale in metres. This drawing is for illustration purposes only. All measurements are approximate and details intended to be relied upon should be independently verified.

Produced by **The Fotobase Group**