



6A Kitson Avenue Richmond SA

3 1 2

Nestled underneath a shady grove of native trees on a quiet street in Richmond lies this stunning Maisonette/cottage-style property. Perfectly blending charm, convenience, privacy and a surprising amount of space, it's a home destined to tug on the heart strings of buyers everywhere.

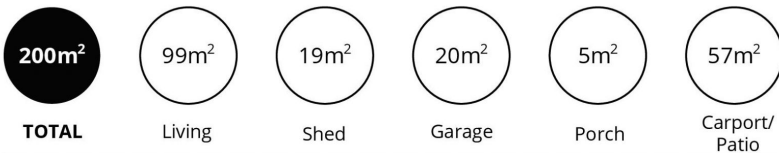
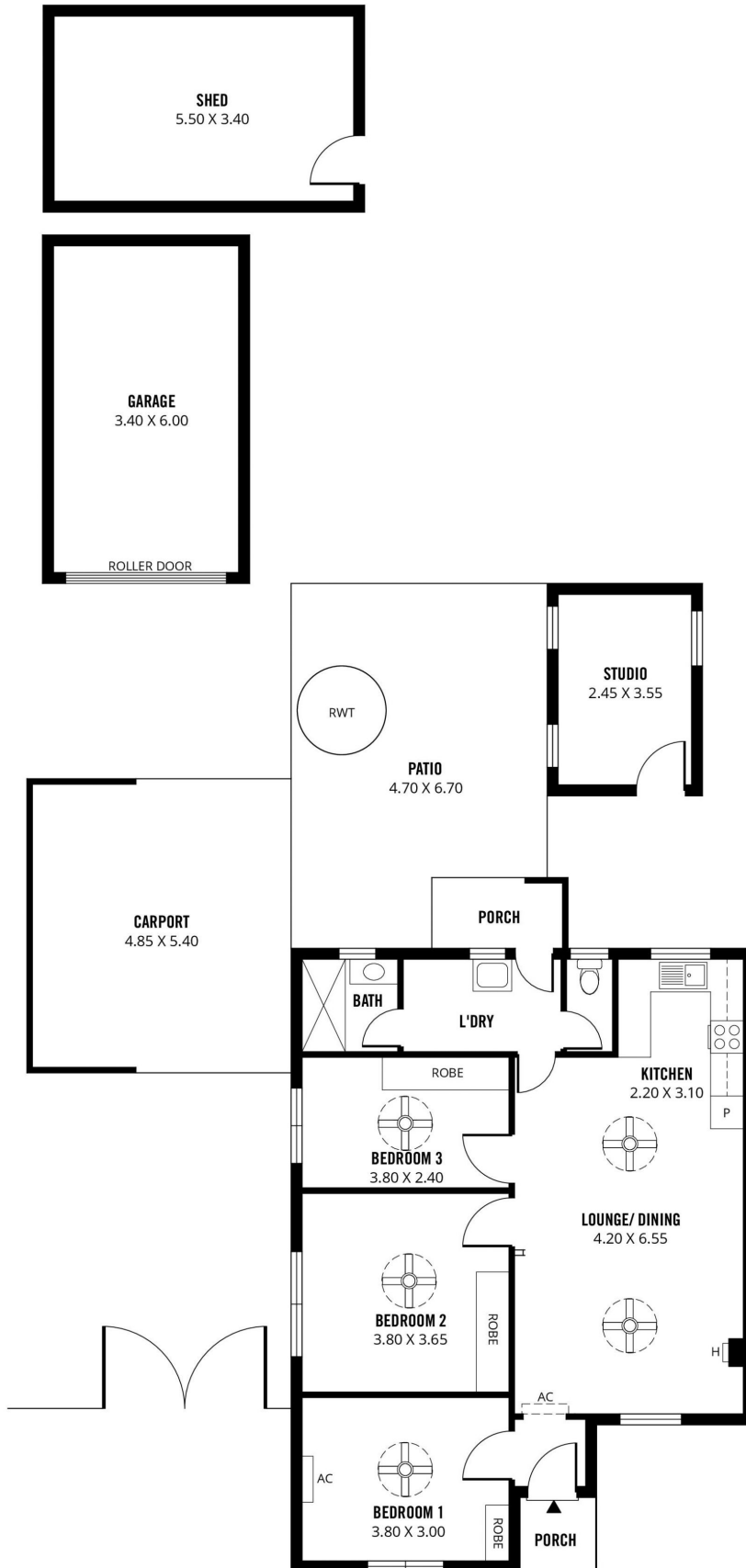
Dappled sunlight paints the exposed brick of the quaint façade, framed by the organic front yard and the long, paved driveway. Upon entry the warm, welcoming timber floors of the open-plan lounge, dining and kitchen greet you, immediately making you feel at home.

A recent renovation ensures beautifully adequate appliances and plenty of bench space in the kitchen, while split-system air-con, a feature gas heater and a ceiling fan will keep you comfortable no matter the season.

Price : \$ 430,000
Land Size : 520 sqm
View : <https://www.sinova.com.au/sale/sa/western-beachside-suburbs/richmond/residential/house/5770458>



Stephen Ong
08 7080 5884



Scale in metres. This drawing is for illustration purposes only. All measurements are approximate and details intended to be relied upon should be independently verified.

Produced by **The Fotobase Group**