



## 6/23 Tudor Street Dulwich SA

2 1 1

Here's a unit with real estate pedigree that'll appeal to smart investors and convenience-loving urbanites. An inner-city gem beckoning you to a life of comfort and plenty, with all the attractions of Adelaide on your doorstep.

**Price** : \$ 335,000

**View** : <https://www.sinova.com.au/sale/sa/eastern-suburbs/dulwich/residential/unit/5783340>

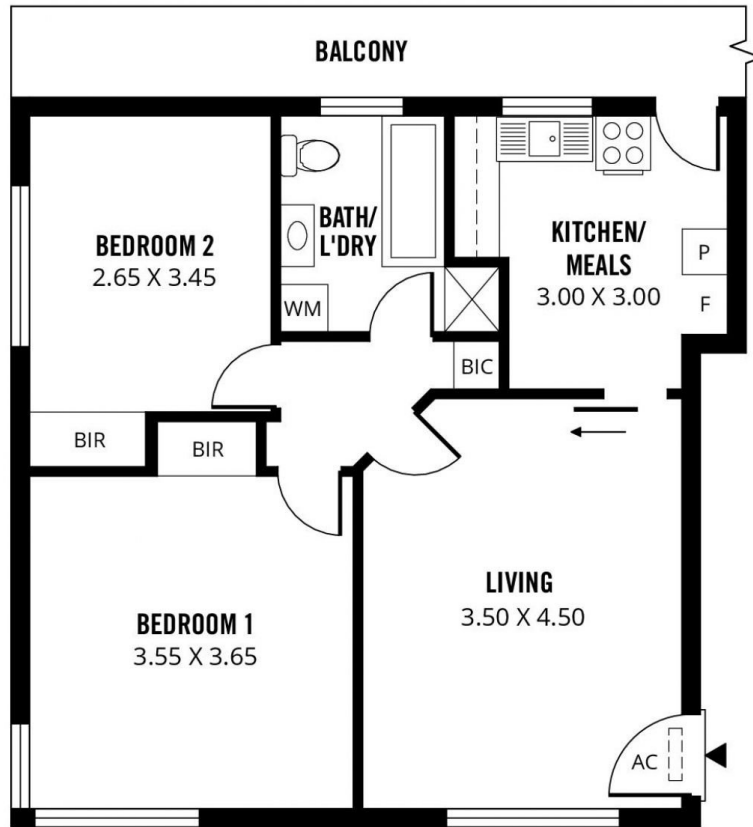
A savvy purchase that will thrust you onto the real estate ladder in style, this is a neat and tidy two-bedroom corner unit in a tightly-held complex.

There's a freshness as you enter thanks to the recent refurbishment and the new coat of paint throughout. Timber laminate floors create a homely feel, enhanced by large windows that let the natural light flood in.

The generous floor plan combines with 2.7-metre high ceilings for free-flowing spatial abundance. An expansive



**Stephen Ong**  
08 7080 5884



(NOT IN ACTUAL POSITION)



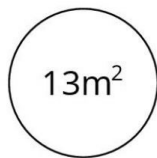
75m<sup>2</sup>

**TOTAL**



62m<sup>2</sup>

Living



13m<sup>2</sup>

Carport

Scale in metres. This drawing is for illustration purposes only. All measurements are approximate and details intended to be relied upon should be independently verified. Produced by **The Fotobase Group**