



24A Ferry Avenue Plympton Park SA

4 2 1

*** sorry no pets

A feature metal fence with an electric gate and intercom subtly secures the front of the property. Behind it the green lawn and exposed brick and render façade combine for strong street appeal, enticing you indoors through either the 2.4-metre high main entrance or the single remote garage.

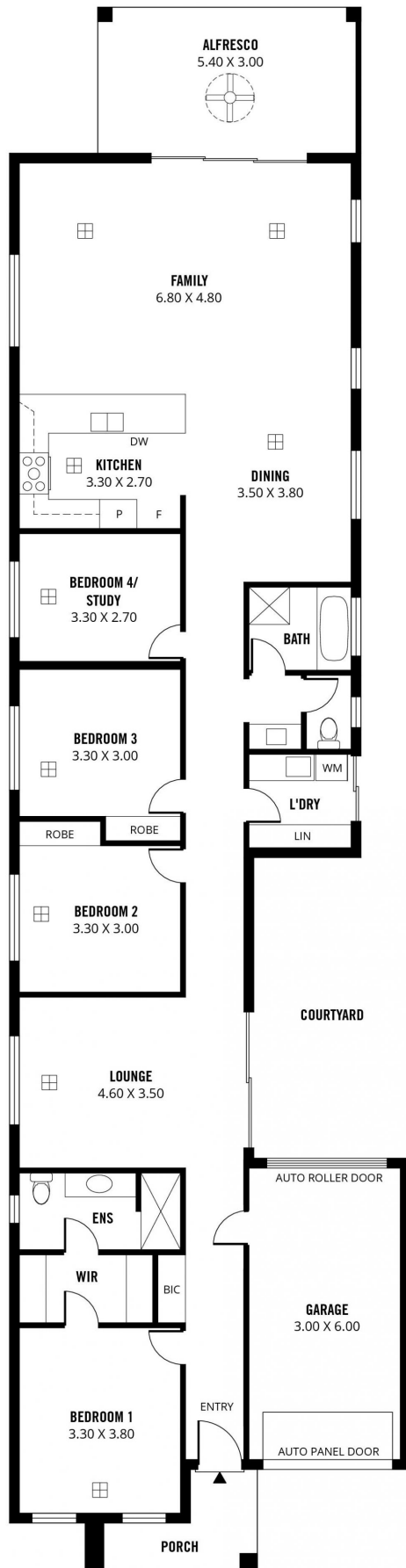
- three bedrooms, a walk-in-robe and stunning ensuite to the master.
- fourth bedroom or that could also be used as a study.
- Lush carpets in the bedrooms are complemented by built-in-robos in two of them

- The main bathroom has a shower with semi-frameless screen, a bathtub, full tiling

Building Size : 206 sqm
Land Size : 400 sqm
View : <https://www.sinova.com.au/lease/sa/south-south-east-suburbs/plympton-park/residential/house/6144574>



Maggie Du
08 7080 5884



Scale in metres. This drawing is for illustration purposes only. All measurements are approximate and details intended to be relied upon should be independently verified.

Produced by **The Fotobase Group**