



6A Bailey Street St Marys SA

3 1 1

If you're looking for complete functionality and comfort in a home that maintains a cheery mood throughout, then you don't want to miss out on this exceptional property. Boasting a timeless mix of elegance and style in a perfect location, it's going to interest growing families and get investors, downsizers and young professionals talking. Be fast to register your interest.

The immediate impression of chic begins when you arrive at this home. The contemporary façade combines large windows and neutral rendering with a perfectly kept front yard, the result being eye catching street appeal. A long driveway leads to the single remote lockup garage, while a feature front porch entices you in to see the interior.

Warm and welcoming timber floors greet you once indoors, and a long passage leads you to the open plan kitchen,

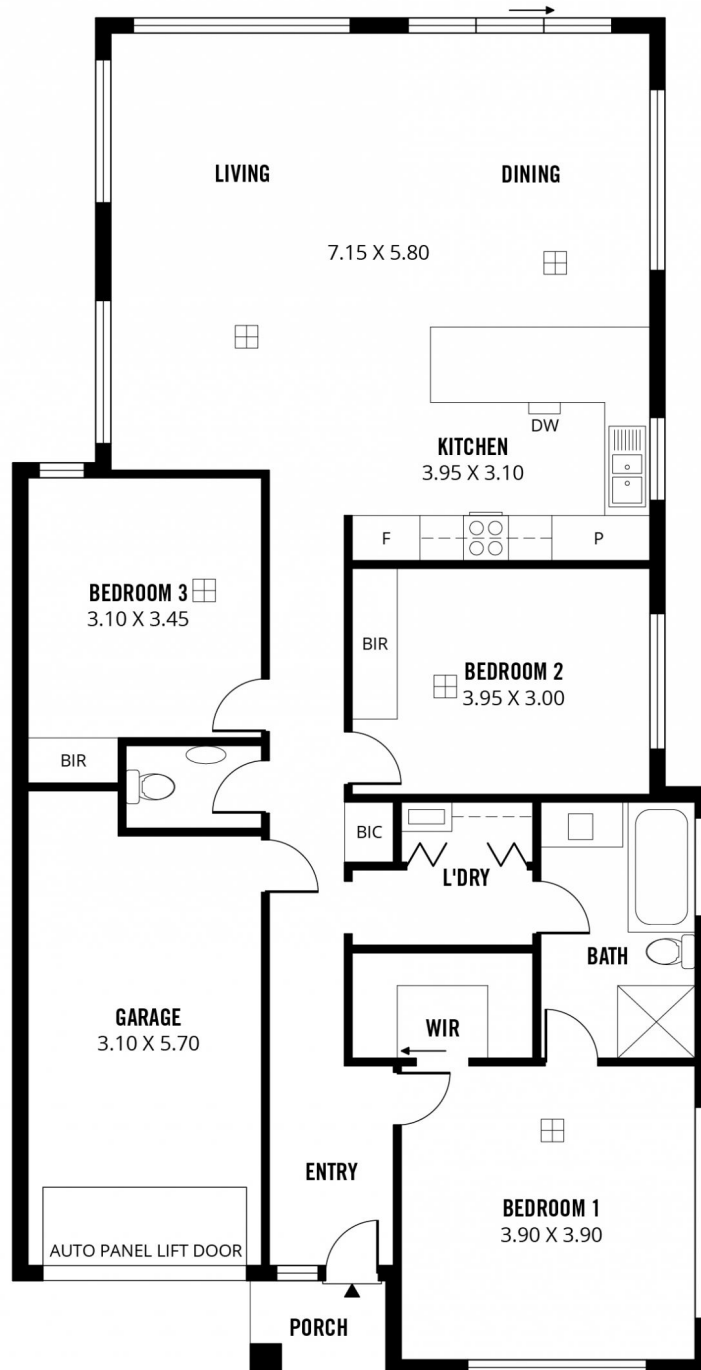
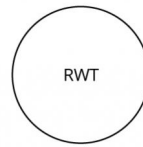
Price : \$ 536,500
Land Size : 326 sqm
View : <https://www.sinova.com.au/sale/sa/south-south-east-suburbs/st-marys/residential/house/6279806>



Jarrod Leow
08 7080 5884



Stephen Ong
08 7080 5884



149m²

TOTAL

127m²

Living

2m²

Porch

20m²

Garage

Scale in metres. This drawing is for illustration purposes only. All measurements are approximate and details intended to be relied upon should be independently verified.

Produced by **The Fotobase Group**