

23 Long Street Plympton SA

4 2 4

Bond - 6 Weeks rent equivalent

Pets - Sorry, not allowed

Furniture - unfurnished (the DIY sized display shelf in living and lounge room will stay)

Water Charges - All water usage and water supply

If you wish to apply for this property, Please apply through www.1form.com.au and send your application to info@sinova.com.au

This huge 4 bedrooms double story family home is rare to find, the living space is over 300sqm, Offering a flexible floor plan and many living options, the home is located close to parks, schools and shops.

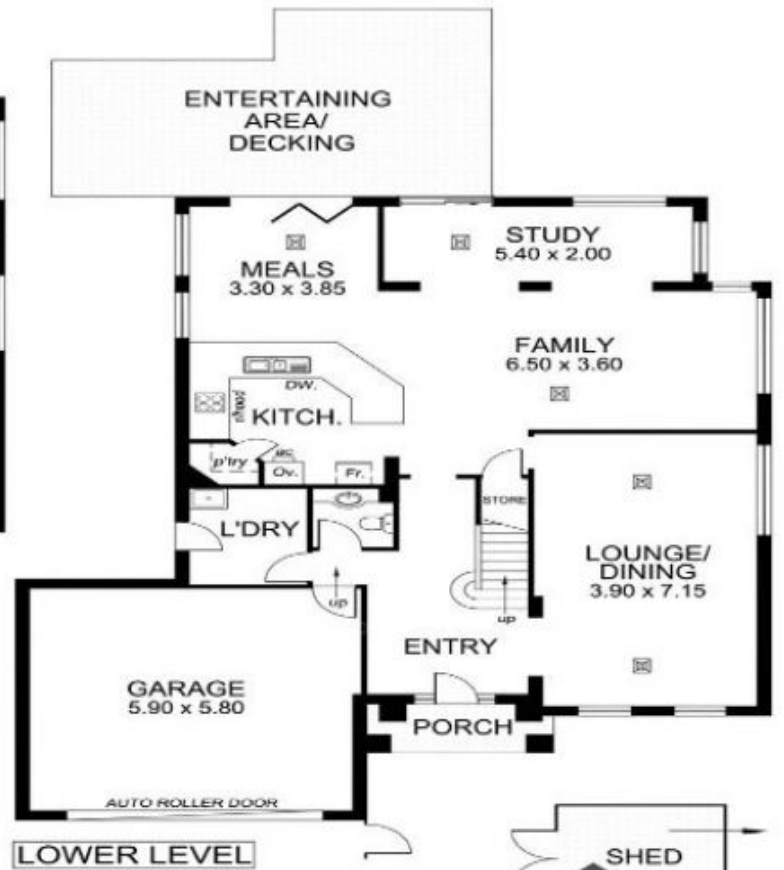
First floor

- Open plan living, dining and kitchen with plenty natural

View : <https://www.sinova.com.au/lease/sa/south-south-east-suburbs/plympton/residential/townhouse/6466450>



Maggie Du
08 7080 5884



This drawing is for illustration purposes only.
 All measurements are approximate only and information
 intended to be relied upon should be independently verified.

