



1/50 Beulah Road Norwood SA

3 2 2

With elements of raw urban industrial chic fused with modern functionality and style, this exceptional townhouse redefines timeless architecture. Bold, expressive accents and a flexible, flowing floorplan create a breathtaking canvas of comfort that impresses from front to back. Come inside and experience living like never before.

But first, be amazed by the eye-catching exterior, where exposed brick seamlessly integrates with metal beams for a classic and inviting look. A solid fence with a timber gate, complete with intercom, provides a secure perimeter. It borders a low-maintenance courtyard which provides access to the lower level.

Downstairs there's a strong focus on open plan living, with the lounge, kitchen, meals and dining areas effortlessly flowing into each other. Warm floating timber floorboards

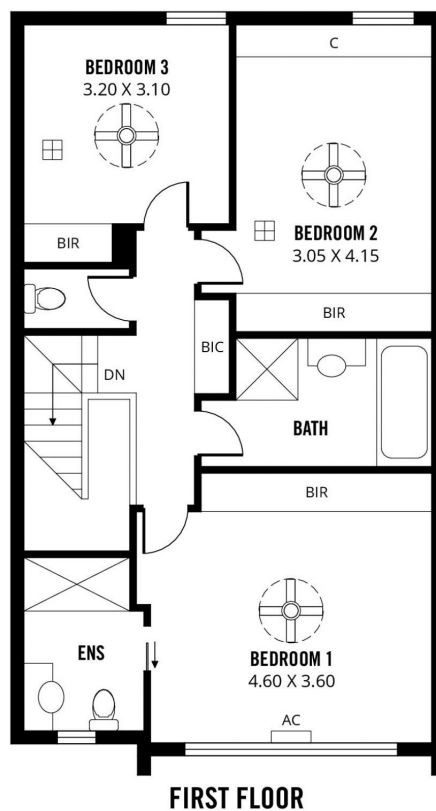
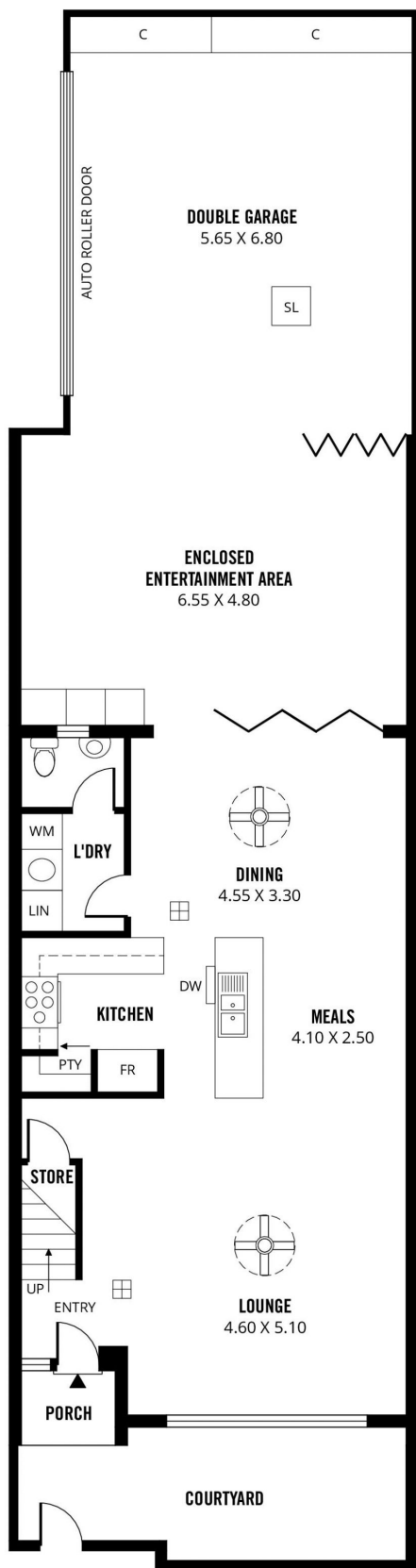
Price : \$ 1,000,000
Building Size : 230 sqm
View : <https://www.sinova.com.au/sale/sa/eastern-suburbs/norwood/residential/townhouse/6665866>



Stephen Ong
08 7080 5884



Jarrod Leow
08 7080 5884



230m²

TOTAL

156m²

Living

41m²

Garage

2m²

Porch

31m²

Entertaining Area



Scale in metres. This drawing is for illustration purposes only. All measurements are approximate and details intended to be relied upon should be independently verified. Produced by **The Fotobase Group**