

### 292A Portrush Road Kensington SA

3 2 1

This sleekly modern gem brings together an inspiring blend of conscientious design, thoughtful touches and unsurpassed construction. The result is a masterful house that redefines the concepts of lifestyle and comfort, taking them to new heights you have to experience for yourself.

Set in a new complex, an immediate impression of style is made by the contemporary combination façade. Multiple materials effortlessly interlink for maximum aesthetic appeal, hinting at the exciting interiors of the dual level house and enticing you indoors.

On the upper-level, open plan living creates a flowing space which is roomy and flooded in natural light. Multiple living areas elegantly co-exist, with ample space offered for relaxation and socialising, all centred by the impressive gourmet kitchen. A massive outdoor alfresco balcony area,

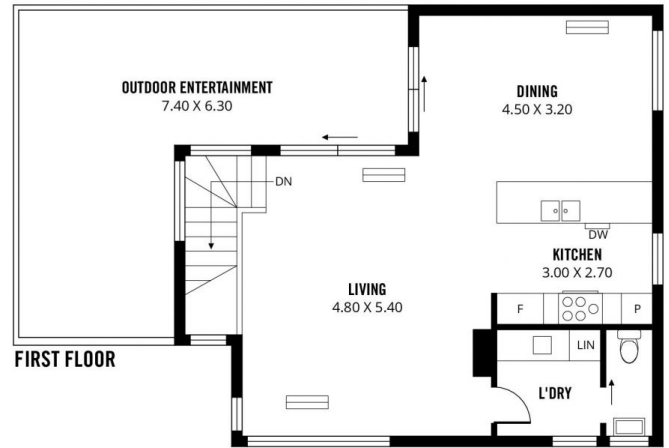
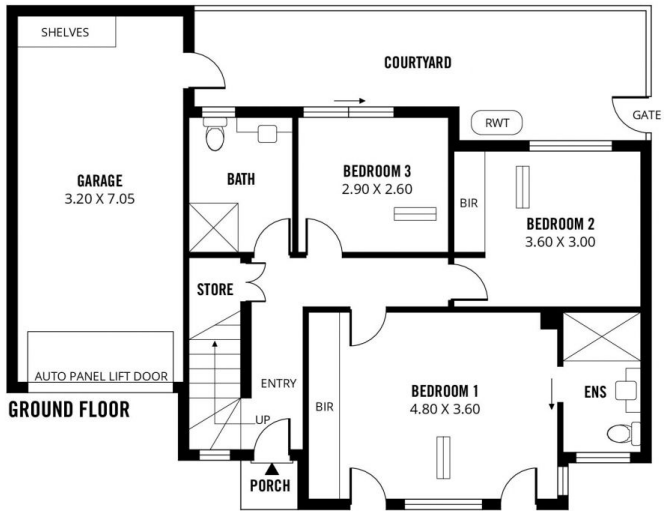
**Price** : \$ 760,000

**View** : <https://www.sinova.com.au/sale/sa/eastern-suburbs/kensington/residential/house/6678224>



**Doris He**  
0423 707 585

**Sandra Huang**  
0499 016 881



Scale in metres. This drawing is for illustration purposes only. All measurements are approximate and details intended to be relied upon should be independently verified.

Produced by **The Fotobase Group**