



### 49A Cudmore Terrace Henley Beach SA

3 2 1

Auction on 6th November, 3pm onsite (U.S.P.)

Have you got a taste for the eclectic and an eye for modern aesthetics? If so, we have just the right piece of real estate for you.

The intent of the forward-thinking architects is immediately clear from the bold and sleek façade. Created by Broadfeather Design, it elegantly combines Matrix cladding with rendered elements to superb effect.

A well-maintained front yard complements the driveway to a remote-controlled garage. Meanwhile expansive glass windows entice you through the statement entry area. Here 'Grand Design' features of full height glass, timber stairs and advanced lighting greet you.

**Price** : \$ 910,000

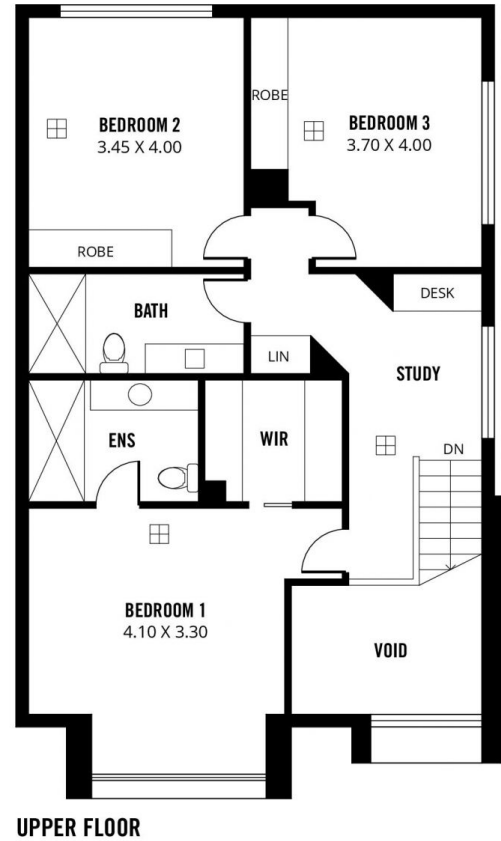
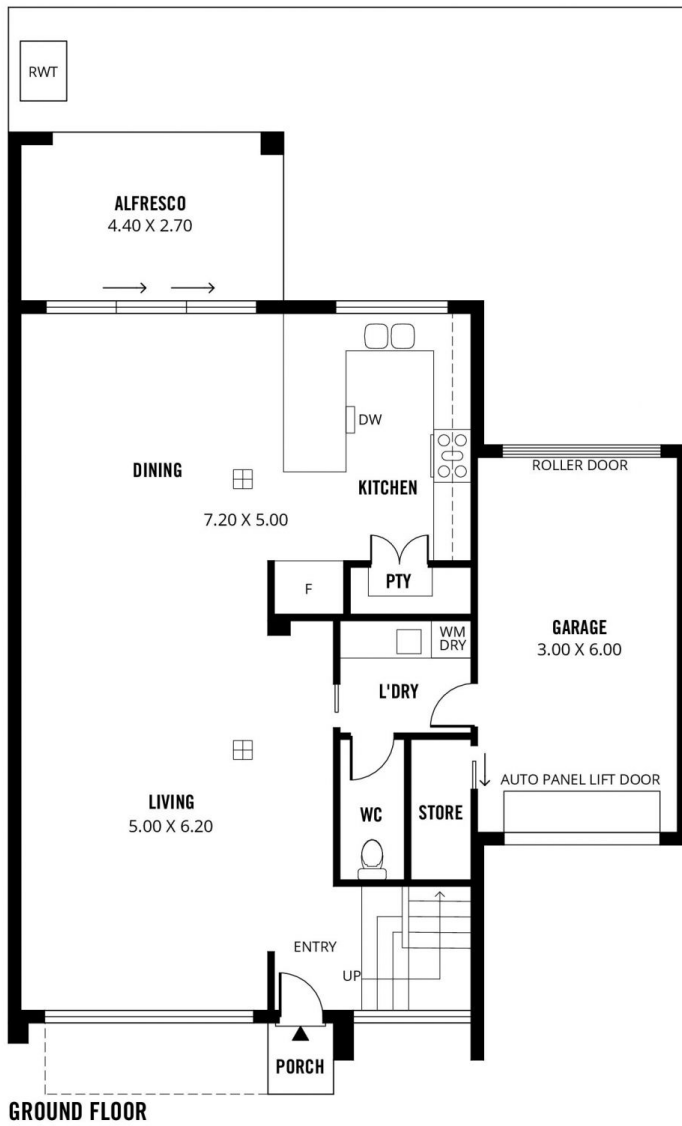
**View** : <https://www.sinova.com.au/sale/sa/western-beachside-suburbs/henley-beach/residential/house/6684496>



**Stephen Ong**  
08 7080 5884



**Jarrod Leow**  
08 7080 5884



Scale in metres. This drawing is for illustration purposes only. All measurements are approximate and details intended to be relied upon should be independently verified.

Produced by **The Fotobase Group**