



15b Weaver Street Hectorville SA

3 2 2

*** How to apply: If you wish to apply for this property, Please apply through www.1form.com.au and send your application to info@sinova.com.au

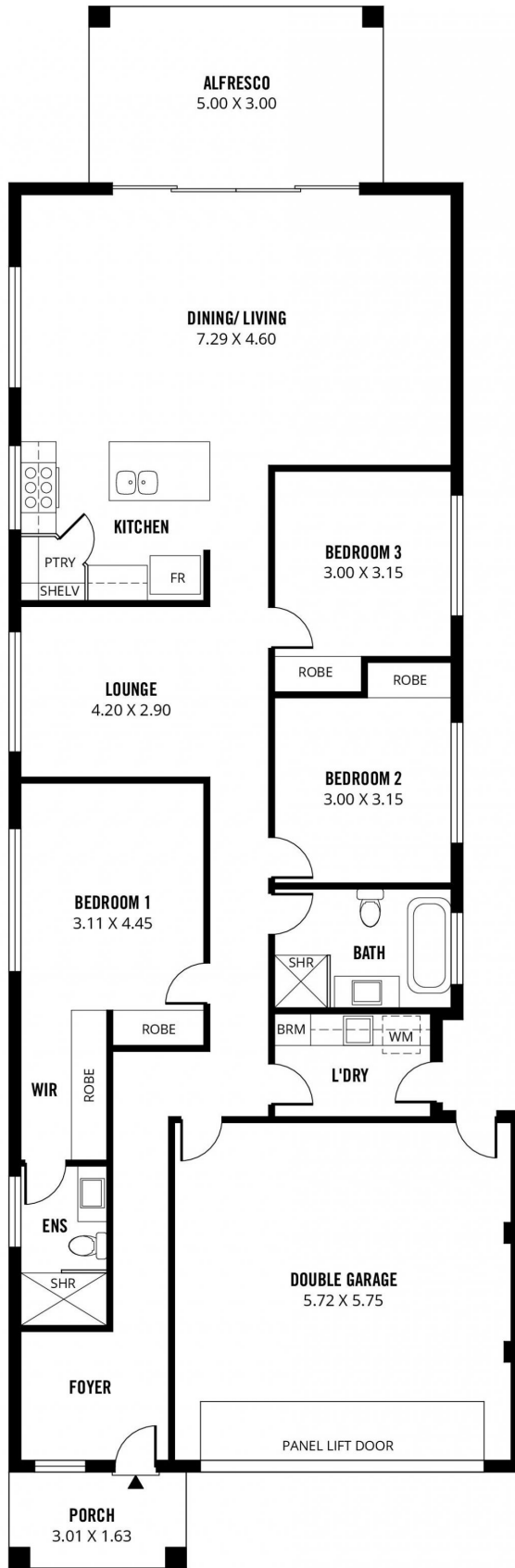
View : <https://www.sinova.com.au/lease/sa/eastern-suburbs/hectorville/residential/house/6784825>

Bond - 6 Weeks rent equivalent
Pets - Not allowed
Furniture - No Furniture
Water Charges - All water usage and water supply
Available from: 20 Jan 2022

- Built-in-robos
- 2.7-metre high ceilings
- North-facing living area
- LED lighting throughout
- 40mm stone benchtops in kitchen
- Stainless steel SMEG 900mm gas cooktop & rangehood, 600mm Oven and dishwasher;



Maggie Du
08 7080 5884



195m²

TOTAL

139m²

Living

15m²

Alfresco

36m²

Garage

5m²

Porch



Scale in metres. This drawing is for illustration purposes only. All measurements are approximate and details intended to be relied upon should be independently verified.

Produced by The Fotobase Group