



24A Ferry Avenue Plympton Park SA

4 🚗 2 🚗 1 🚗

*** How to apply: If you wish to apply for this property, Please apply through www.1form.com.au and send your application to info@sinova.com.au

Bond - 6 Weeks rent equivalent

Pets - Not allowed

Furniture - No Furniture

Water Charges - All water usage and water supply

Building Size : 206 sqm

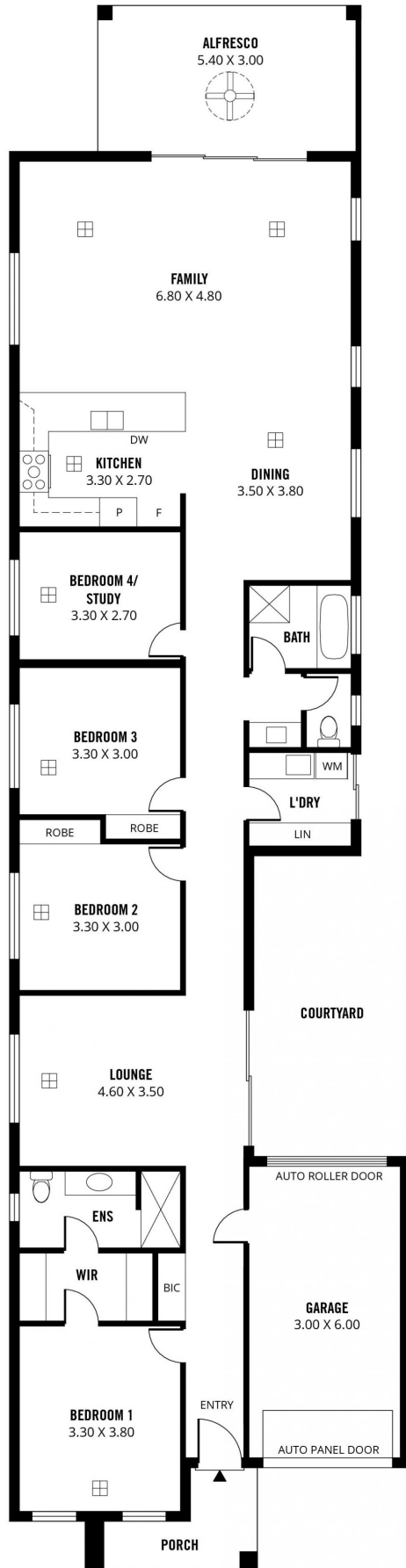
Land Size : 400 sqm

View : <https://www.sinova.com.au/lease/sa/south-south-east-suburbs/plympton-park/residential/house/6838784>

A feature metal fence with an electric gate and intercom subtly secures the front of the property. Behind it the green lawn and exposed brick and render façade combine for strong street appeal, enticing you indoors through either the 2.4-metre high main entrance or the single remote garage.



Maggie Du
08 7080 5884



207m²

164m²

16m²

22m²

5m²

TOTAL

Living

Alfresco

Garage

Porch

Scale in metres. This drawing is for illustration purposes only. All measurements are approximate and details intended to be relied upon should be independently verified.

Produced by **The Fotobase Group**