



5/13-15 Leslie Avenue Evandale SA

2 1 1

Sitting less than 10-minutes from the centre of Adelaide in a quiet, leafy area, this exceptional, low-maintenance gem is a golden opportunity for investors, first homeowners or anyone enchanted by convenient living.

Price : \$ 406,000

View : <https://www.sinova.com.au/sale/sa/eastern-suburbs/evandale/residential/unit/7109689>

In a tightly held group of seven units, this is a solidly constructed home that feels surprisingly spacious thanks to the open-plan design. It integrates the kitchen, living and dining area for a comfortable, airy space that is welcoming and homely. Here the natural light floods in through a large window, while a brand-new split system aircon ensures comfort all year round.

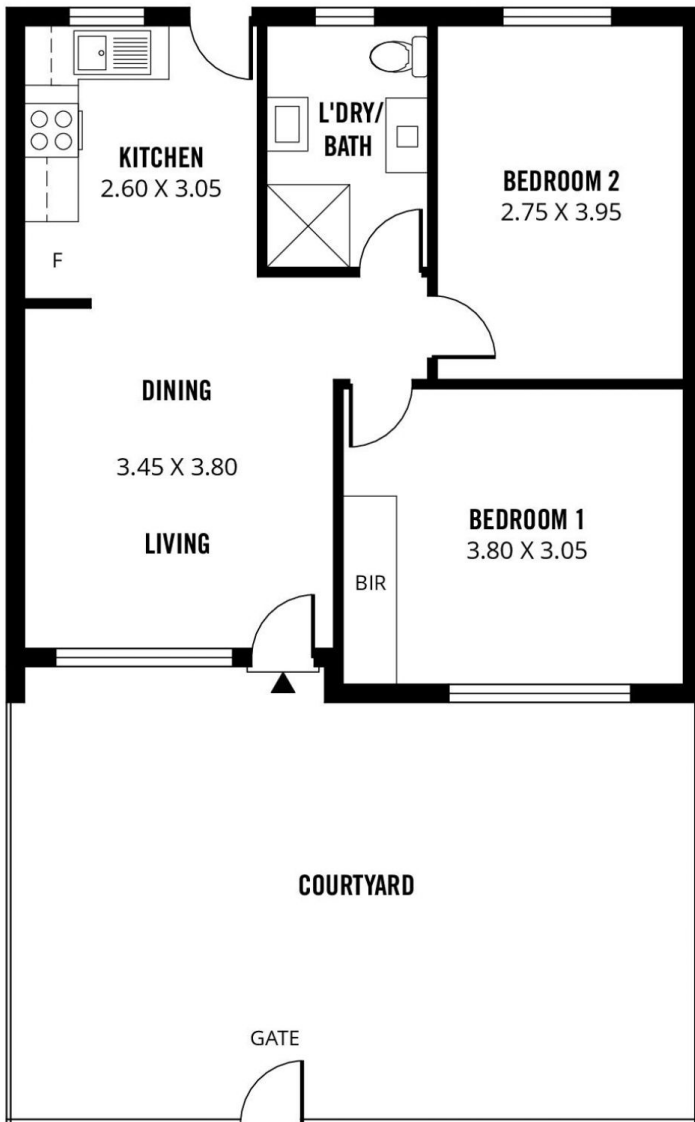


Jarrod Leow
08 7080 5884



Chea Chee Tan
0405 018 873

The kitchen comes with a range of appliances including a four-burner gas cooktop, an oven, rangehood, and storage space. It enjoys access to the easy-to-manage courtyard, which has a clothesline.



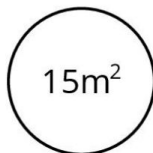
(NOT IN ACTUAL POSITION)



TOTAL



Living



Carport



Scale in metres. This drawing is for illustration purposes only. All measurements are approximate and details intended to be relied upon should be independently verified. Produced by **The Fotobase Group**