



602/185 Morphett Street Adelaide SA

1 1 1

This extra spacious apartment makes a compelling case to end your search for the perfect inner-city apartment, thanks to the seamless combination of an outstanding location and intuitive design in a well-maintained complex.

A neat aesthetic and 2.6-metre-high ceilings greets you upon entry to the unit, where the commitment to high end fittings and fixtures is evident. Covering 62-square-metres of living space, it enjoys timber floors to the living and dining and low maintenance tiling to the kitchen.

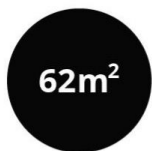
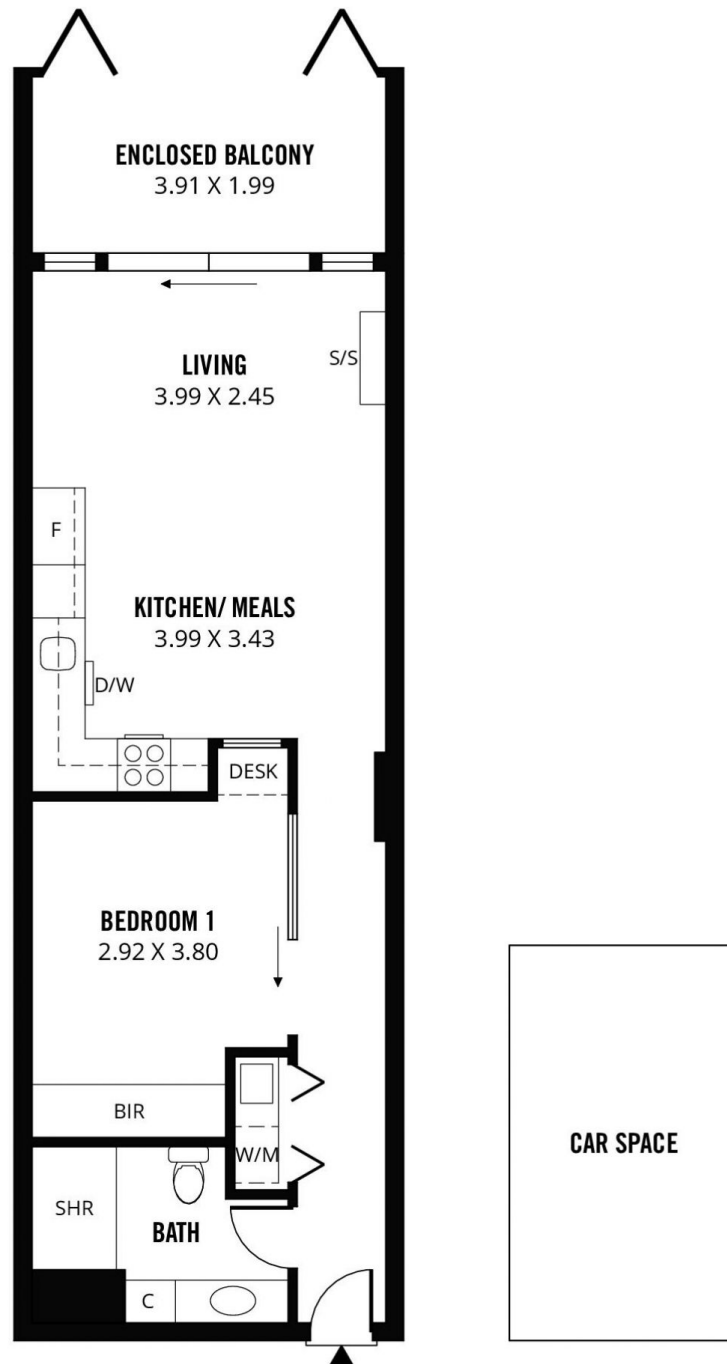
Open plan design means the well-equipped kitchen is incorporated into the living and meals area, which has a split-system aircon unit. Sliding glass doors lead out to the private, enclosed balcony, which can be enjoyed all year round.

Price : \$ 315,000

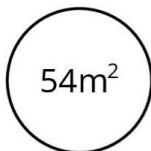
View : <https://www.sinova.com.au/sale/sa/adelaide/adelaide/residential/apartment/7132741>



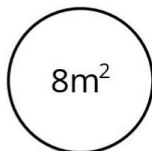
Stephen Ong
08 7080 5884



TOTAL



Living



Enclosed
Balcony



Scale in metres. This drawing is for illustration purposes only. All measurements are approximate and details intended to be relied upon should be independently verified.

Produced by **The Fotobase Group**