



46 Avenue Road Glynde SA

4 1 3

*** How to apply: If you wish to apply for this property, Please apply through [realestate.com.au](https://www.realestate.com.au) using the APPLY button

View : <https://www.sinova.com.au/lease/sa/eastern-suburbs/glynde/residential/house/7262398>

Bond: 6 weeks rent equivalent

Pet Policy: Negotiable

Lease term: 12 months

Water charges: Tenant to pay all water usage and water supply charges

An established home already exists on the block. Solid brick family home featuring

- 4 bedrooms, lounge/ family area, kitchen, bathroom, separate toilet and laundry
- Sandstone fronted home with 3m ceiling height and ornate ceiling
- Front and back veranda

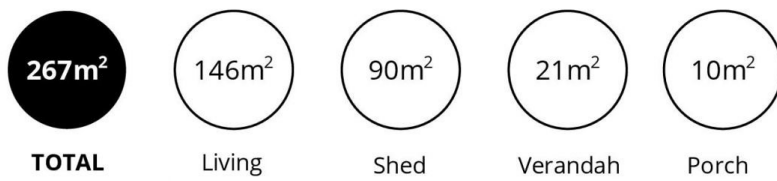
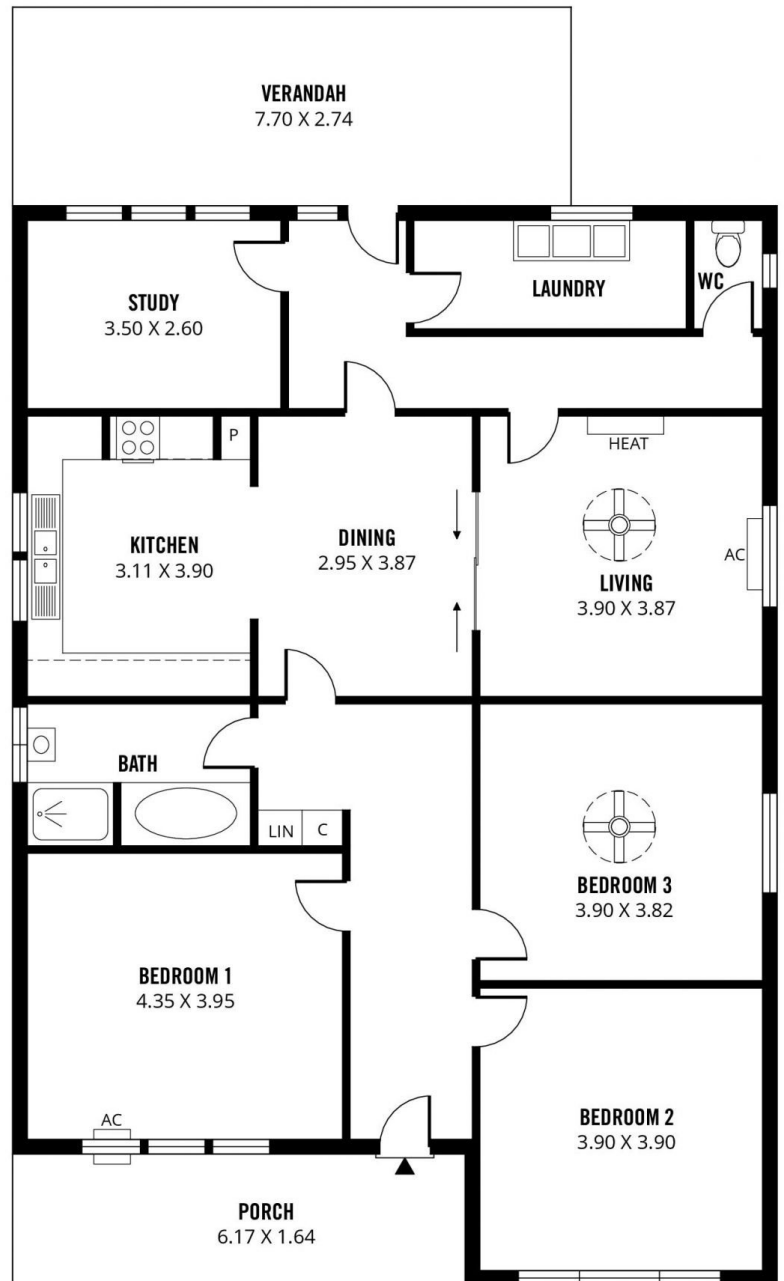
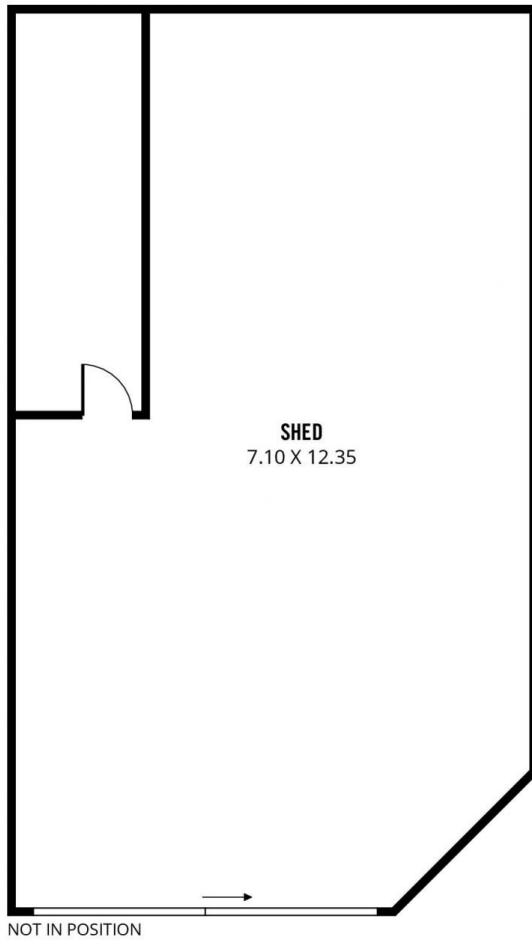


David Deng
08 7080 5884



Hannah Wong
08 7080 5884

<https://www.sinova.com.au>



Scale in metres. This drawing is for illustration purposes only. All measurements are approximate and details intended to be relied upon should be independently verified.

Produced by **The Fotobase Group**