



## 2/15 Regent Place Kensington SA

2 1 1

In a sought-after complex, this attractive apartment represents the zenith of low-maintenance urban living. Just a stone's throw from the city centre, convenience and comfort collide to magnificent effect here.

Boasting solid brick construction, there's a feel of dependability, graced with style, to the complex as a whole and certainly to this apartment. Located on the ground floor, it enjoys open plan living to the kitchen, dining and living areas, where dark timber floors create a homely environment. The space is airconditioned for comfort all year round.

The kitchen has been renovated with quality appliances and plenty of cabinetry storage. There is access from here to a private rear courtyard, complete with storage shed. A second covered outdoor area can be accessed via glass

**Price** : \$ 465,000

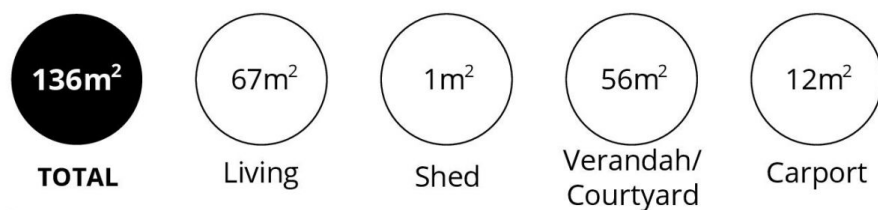
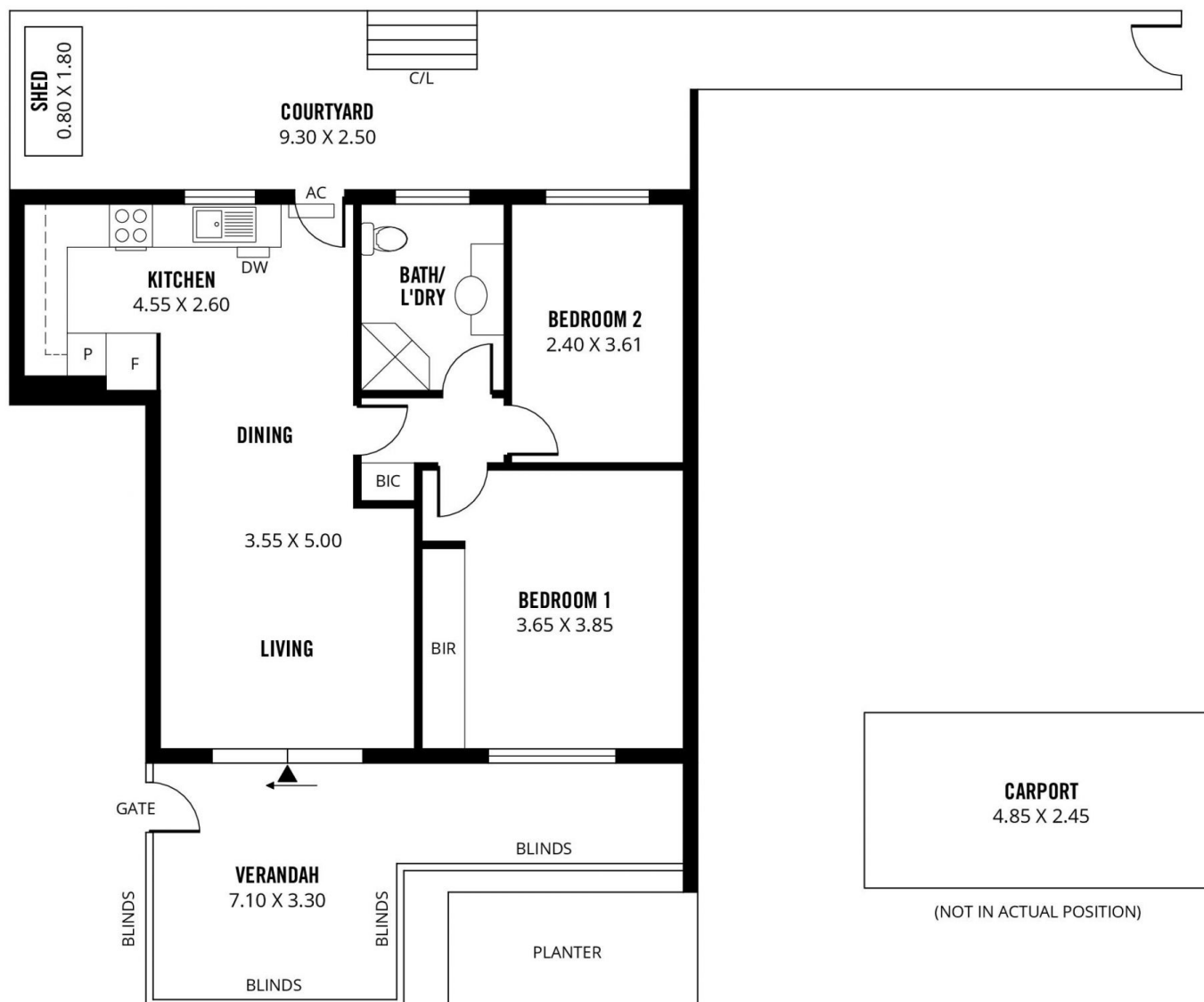
**View** : <https://www.sinova.com.au/sale/sa/eastern-suburbs/kensington/residential/unit/7271339>



**Stephen Ong**  
08 7080 5884



**David Deng**  
08 7080 5884



Scale in metres. This drawing is for illustration purposes only. All measurements are approximate and details intended to be relied upon should be independently verified.

Produced by **The Fotobase Group**