

## 8A Swinburne Avenue Plympton Park SA

4 3 2

This stunning family home takes an uncompromising approach towards luxury living. It's breezy, bright and beautifully lit. It's homely, it's functional, it's classy. It resonates with a specific sense of style throughout, offering a low-maintenance life of comfort in a sought-after pocket of Plympton Park.

Upon arrival the lengthy 19.55-metre frontage of the Torrens-Title home greets you. Artificial lawn graces the easily cared for front yard, while a metal fence enhances the security of the property. An automatic gate provides access to the driveway, leading to the double lock up remote garage.

The contemporary façade is eye-catching and bold, with a feature covered porch inviting you in through the broad timber front door.

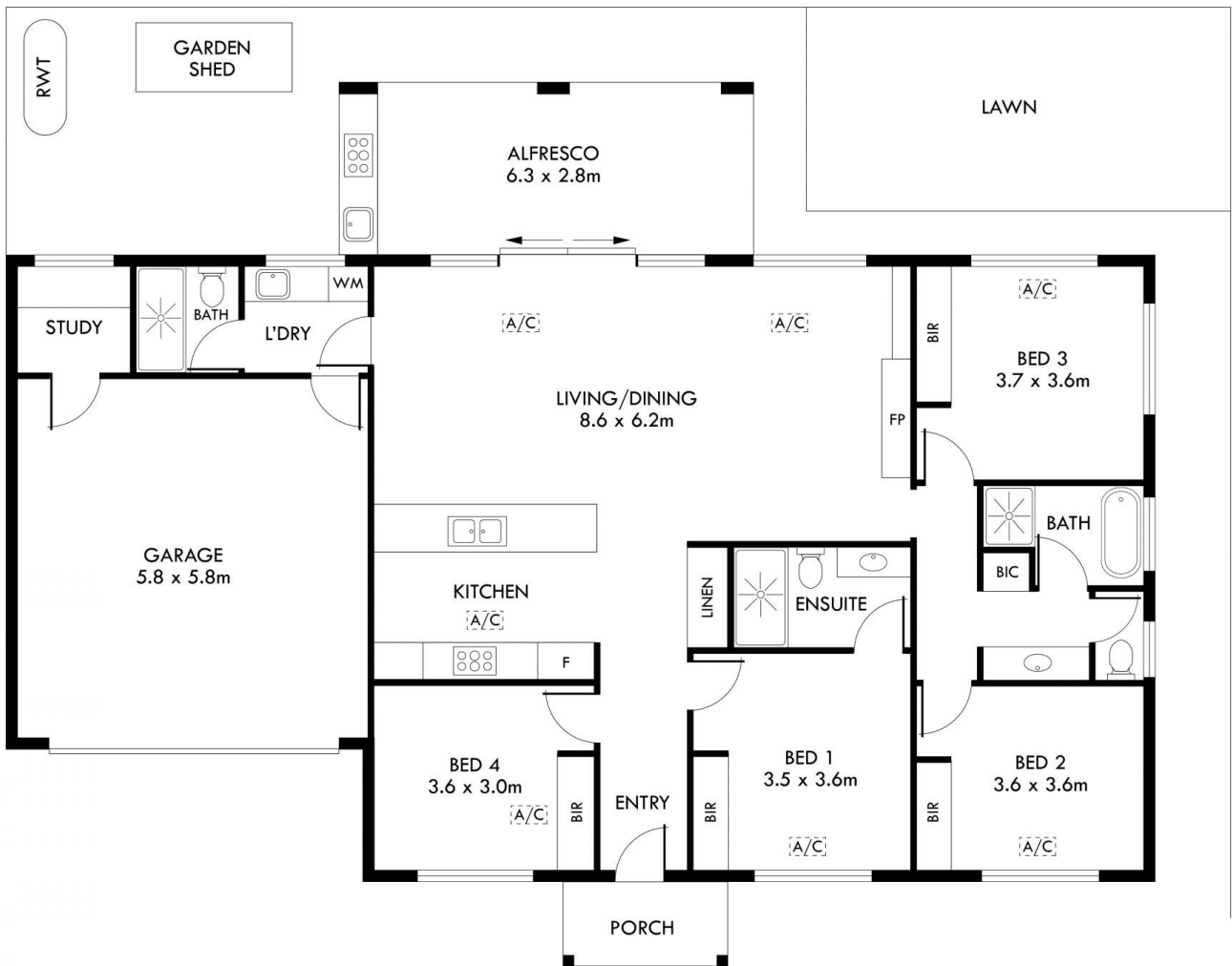
**Price** : \$ 988,000  
**Land Size** : 346 sqm  
**View** : <https://www.sinova.com.au/sale/sa/south-south-east-suburbs/plympton-park/residential/house/7283144>



**Jarrod Leow**  
08 7080 5884



**Stephen Ong**  
08 7080 5884



8A SWINBURNE AVENUE, PLYMPTON PARK

INTERNAL	172 SQM
EXTERNAL	21 SQM
TOTAL	193 SQM