

#### 4C Laurel Avenue Campbelltown SA

4 3 2

This modern townhouse, built in 2022, sets a new benchmark. It's a tribute to well thought-out design; meticulously laid-out for a convenient, low maintenance lifestyle that doesn't compromise on comfort.

Upon arrival the clean lines and contemporary finish are sure to impress, setting a statement of class that resonates through the home. A high front fence secures the torrens titled property, complete with electric automatic gate across the driveway. A large double garage with remote panel lift door offers an alternative access to the home.

The front porch and feature timber door lead into the wide entry hallway, where laminate timber flooring and 2.7-metre-high ceilings greet you. The dual-level home has a spacious and thoughtful internal footprint, with the downstairs area incorporating free-flowing open-plan living.

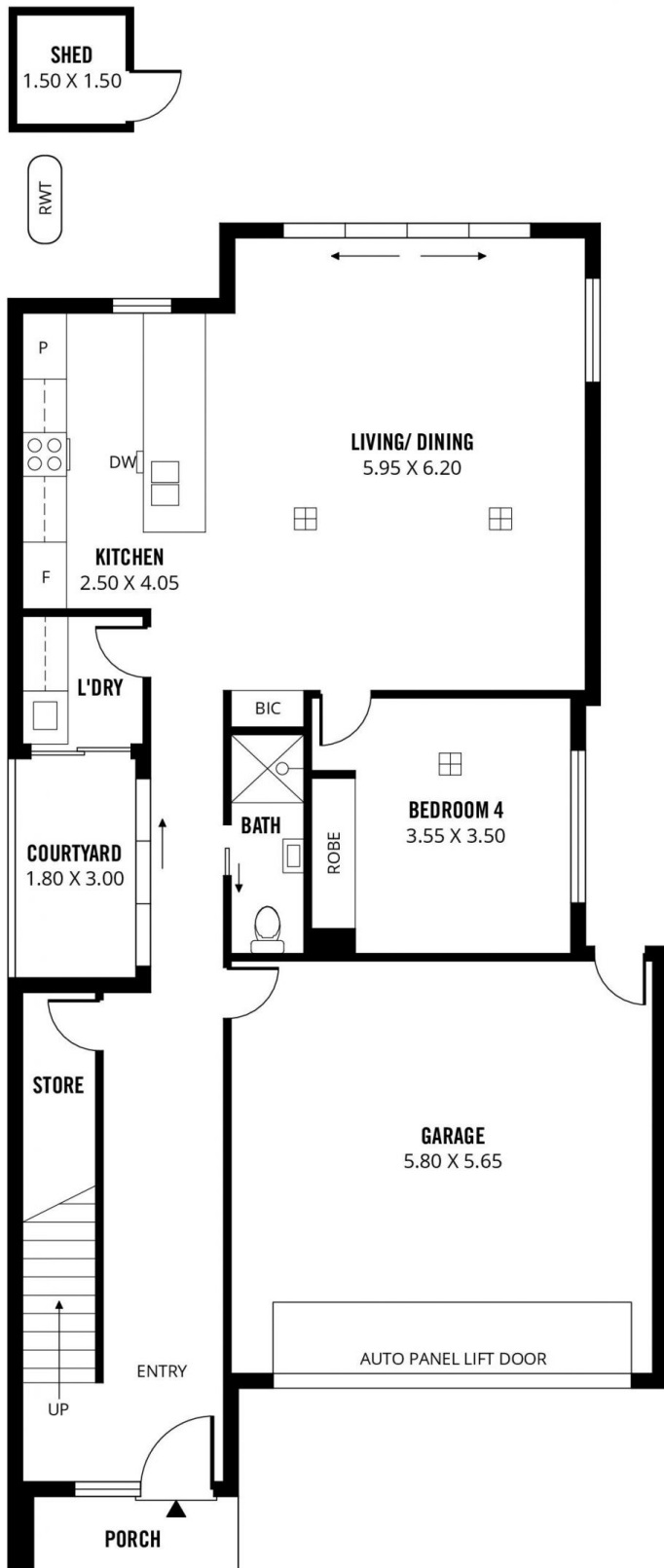
**Price** : \$ 910,000  
**Land Size** : 233 sqm  
**View** : <https://www.sinova.com.au/sale/sa/north-north-east-suburbs/campbelltown/residential/townhouse/7369641>



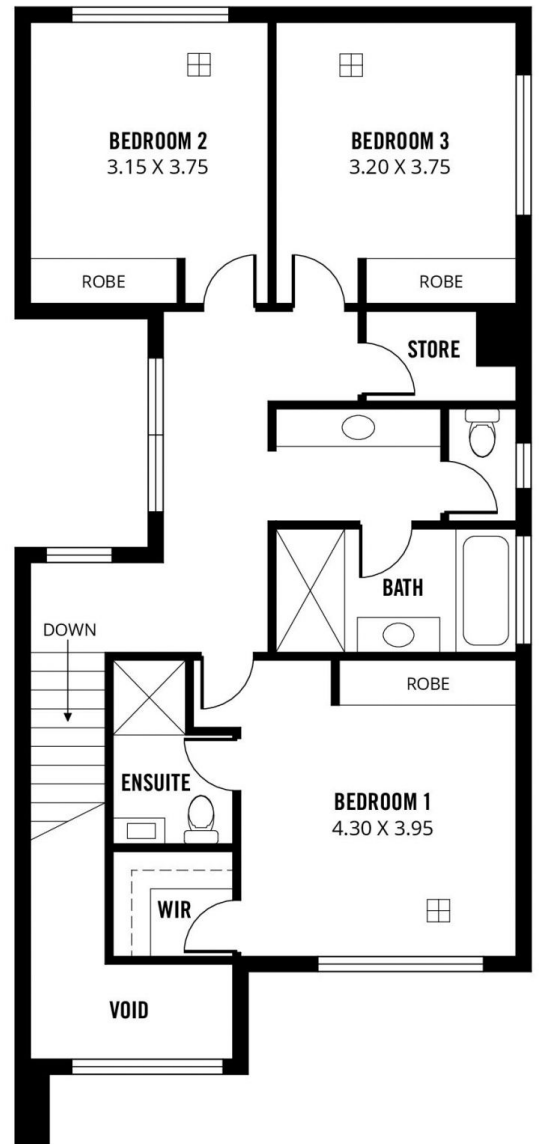
**Jarrod Leow**  
08 7080 5884



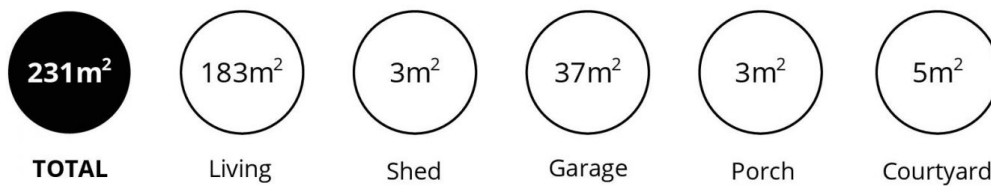
**David Deng**  
08 7080 5884



**GROUND FLOOR**



**UPPER FLOOR**



Scale in metres. This drawing is for illustration purposes only. All measurements are approximate and details intended to be relied upon should be independently verified.

Produced by **The Fotobase Group**