



### 27A Beauchamp Street Kurralta Park SA

4 2 2

A property that strikes the perfect balance between city convenience and high-end luxury. A secure and accessible home that is as lavish as it is functional. Welcome to your upgraded lifestyle.

A double garage offers an alternative entry into the lower level, where the open plan living, meals and kitchen area is the undeniable centre of the home. 2.7metre high ceilings on both levels add to the feeling of spatial extravagance, as does the masses of natural light and the easy sliding door access to the covered alfresco entertaining area.

The kitchen is a gourmet sensation, with 40mm stone bench tops, high end SMEG 900mm wide gas cooktop, rangehood and SMEG multi-function oven and dishwasher. There's plenty of bench and cupboard space, and designer tapware is a nice touch.

**Price** : \$ 810,000

**View** : <https://www.sinova.com.au/sale/sa/western-beachside-suburbs/kurralta-park/residential/townhouse/7408282>



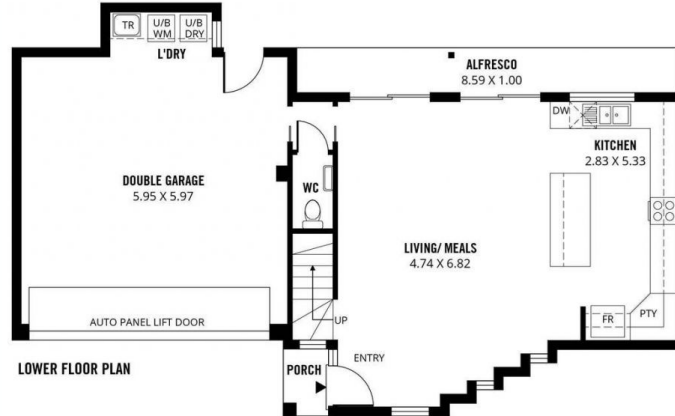
**Jarrod Leow**  
08 7080 5884



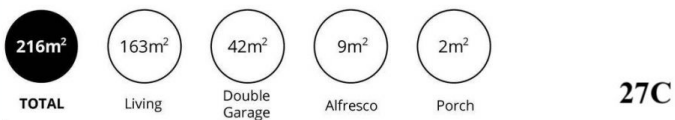
**Chea Chee Tan**  
0405 018 873



UPPER FLOOR PLAN



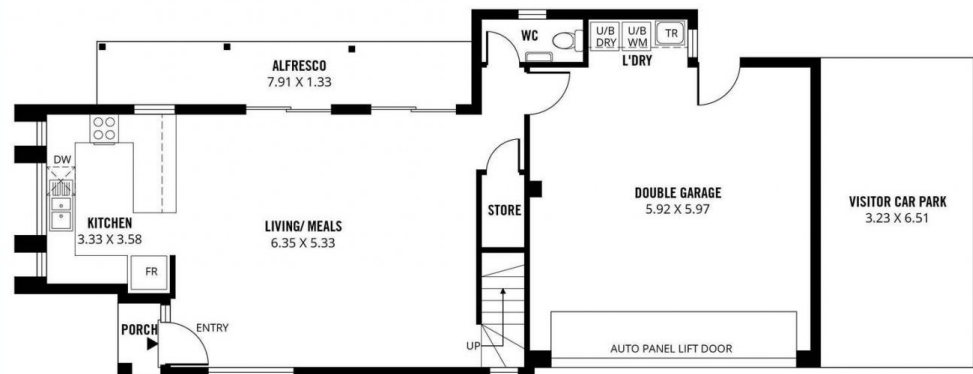
LOWER FLOOR PLAN



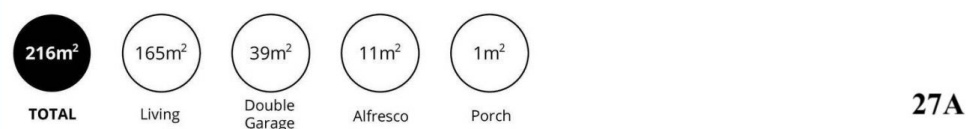
Scale in metres. This drawing is for illustration purposes only. All measurements are approximate and details intended to be relied upon should be independently verified. Produced by The Fotobase Group



UPPER FLOOR PLAN



LOWER FLOOR PLAN



Scale in metres. This drawing is for illustration purposes only. All measurements are approximate and details intended to be relied upon should be independently verified. Produced by The Fotobase Group