



18A South Terrace Plympton Park SA

4 2 1

Between Adelaide city centre and the alluring Glenelg Beach sits this convenient, beautifully appointed family home. A home where the focus on easy living is enhanced by sublime design and a relentless commitment to quality, from the build to the finishes.

Number 18A blends easily into the contemporary street frontage of South Terrace, with its exposed brick facade sitting behind a low-maintenance front yard. A paved driveway leads to the remote lockup garage, and a front porch invites you in.

Here's what we love inside this home:

- Multiple living areas are a strong feature, with a well-lit and carpeted lounge greeting you as you make your way through the home.
- The spacious, thoughtful floor plan incorporates four

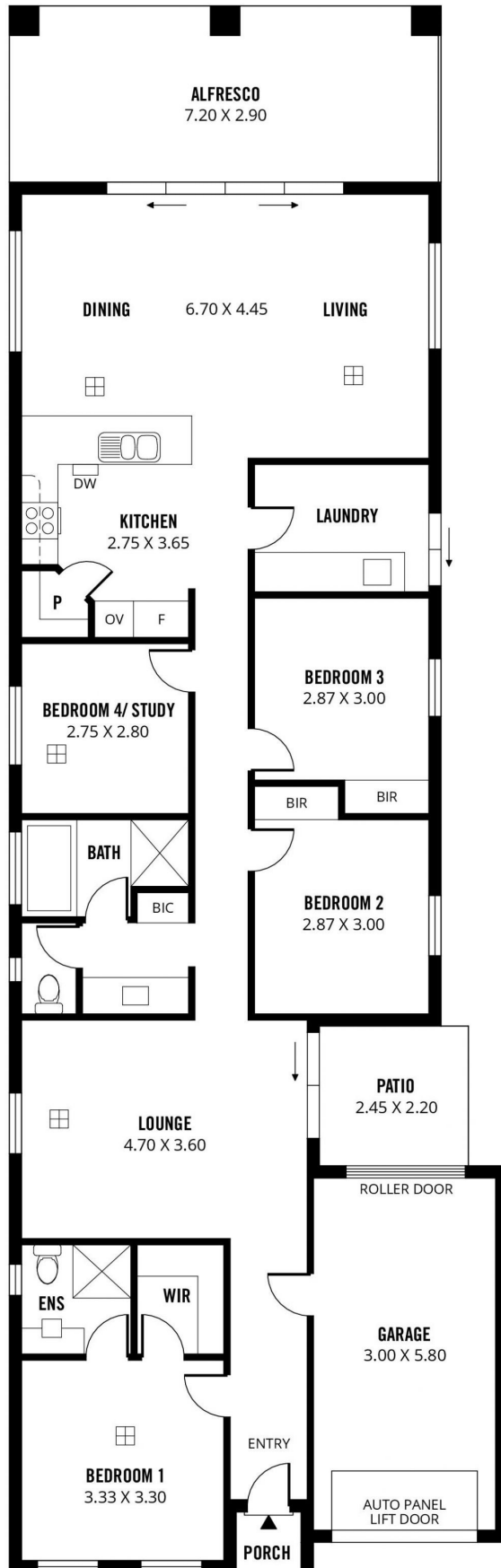
Price : \$ 910,000
Land Size : 359 sqm
View : <https://www.sinova.com.au/sale/sa/south-south-east-suburbs/plympton-park/residential/house/7529682>



Stephen Ong
08 7080 5884



Jarrod Leow
08 7080 5884



189m²

TOTAL

143m²

Living

5m²

Patio

21m²

Alfresco

1m²

Porch

19m²

Garage



Scale in metres. This drawing is for illustration purposes only. All measurements are approximate and details intended to be relied upon should be independently verified. Produced by **The Fotobase Group**