

9 Thomas Street Clarence Gardens SA

3 1 2

Welcome to your new family home at 9 Thomas Street circa 1925 in the delightful suburb of Clarence Gardens. This charming residence offers a warm and inviting atmosphere, combining character-filled features with modern comforts. With its desirable location and appealing attributes, this property is the perfect retreat for you and your loved ones.

Situated on a generous north-facing allotment, this Bungalow-style residence showcases the timeless appeal of a bygone era. The property comprises three bedrooms and one well-appointed bathroom, providing ample space for comfortable family living. The open-plan layout seamlessly connects the living, dining, and kitchen areas, fostering a sense of togetherness and allowing for effortless entertaining.

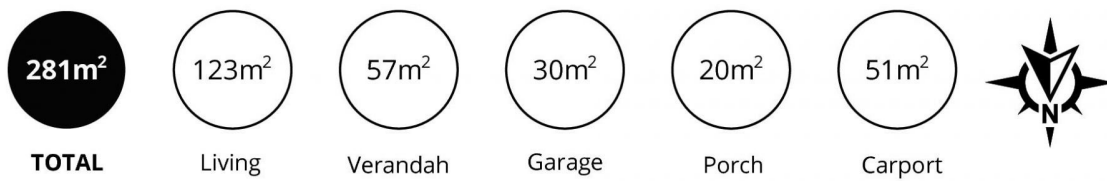
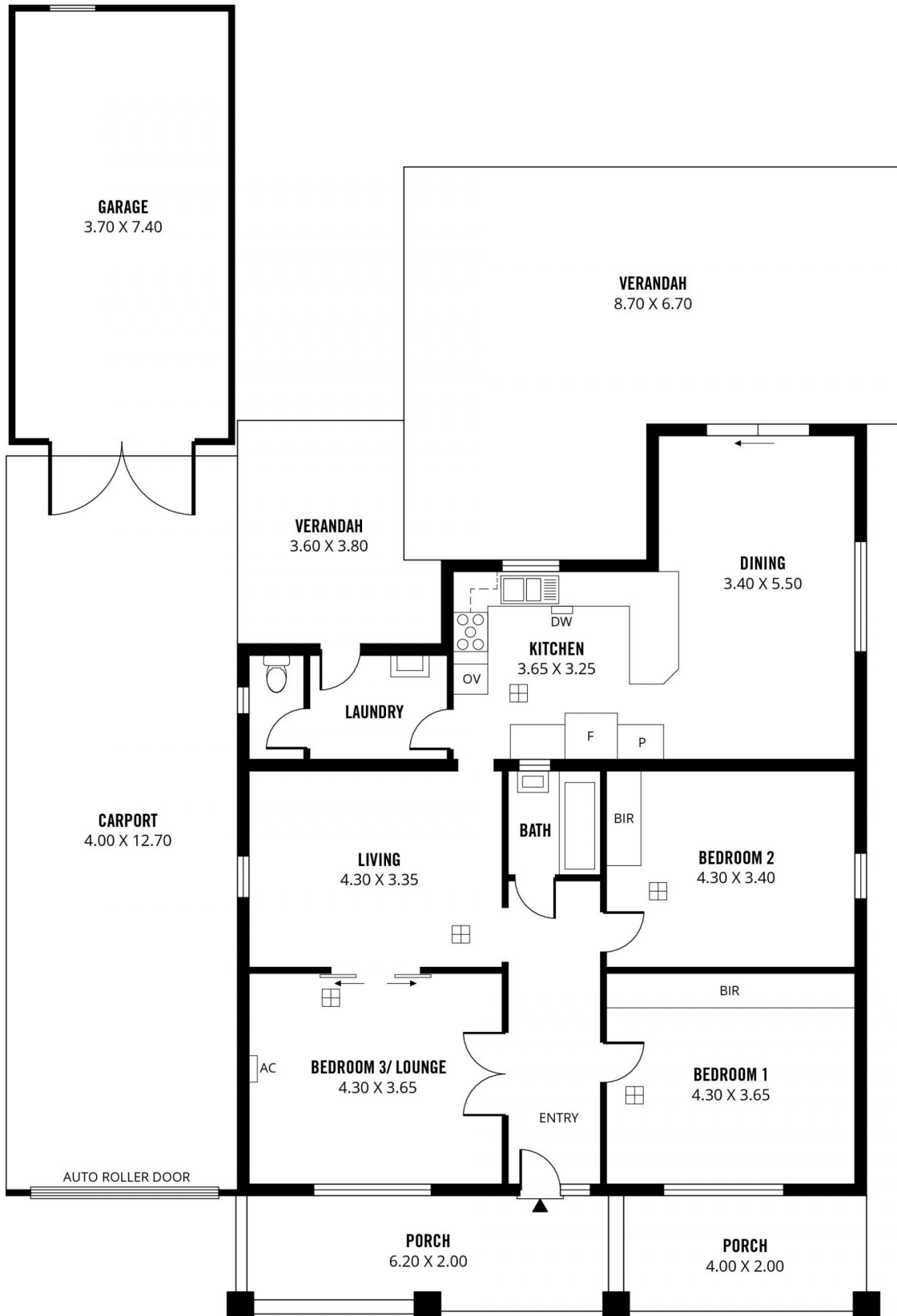
Price : \$ 990,000
Land Size : 749 sqm
View : <https://www.sinova.com.au/sale/sa/south-south-east-suburbs/clarence-gardens/residential/house/7590460>



Jarrod Leow
08 7080 5884



David Deng
08 7080 5884



Scale in metres. This drawing is for illustration purposes only. All measurements are approximate and details intended to be relied upon should be independently verified.

Produced by **The Fotobase Group**