



1/235 Payneham Road Joslin SA

2 1 2

Situated on Payneham Road, Joslin, this property presents an affordable yet enviable opportunity. Nestled within a unit group set discreetly behind houses, it offers a unique blend of comfort and convenience.

Featuring two bedrooms, with one boasting a built-in robe, this home is designed for modern living. The impressive kitchen, complete with gas appliances, seamlessly connects to the adjacent casual dining area, setting the stage for delightful culinary experiences. The vogue bathroom exudes sophistication, showcasing a frameless shower alcove, floating vanity, and floor-to-ceiling tiles.

The property offers both spaciousness and functionality, with a separate lounge providing ample room for relaxation. The flowing layout is complemented by the presence of floating timber flooring throughout, adding an elegant

Price : \$ 466,500

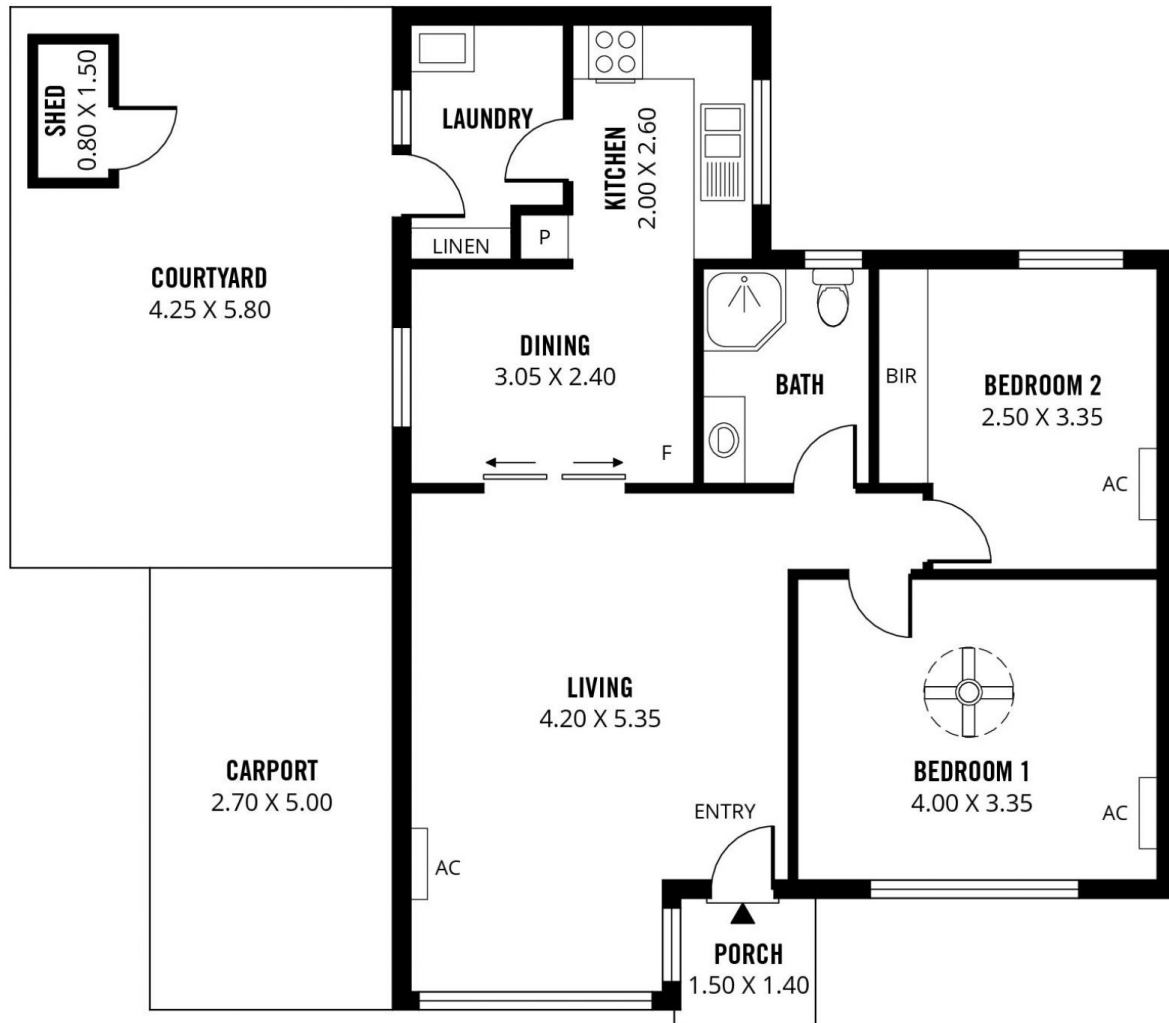
View : <https://www.sinova.com.au/sale/sa/eastern-suburbs/joslin/residential/unit/7708713>



Stephen Ong
08 7080 5884



David Deng
08 7080 5884



119m²

TOTAL

78m²

Living

25m²

Courtyard/
Shed

14m²

Carport

2m²

Porch



Scale in metres. This drawing is for illustration purposes only. All measurements are approximate and details intended to be relied upon should be independently verified. Produced by **The Fotobase Group**