



1 Roberts Street Lightview SA

5 3 2

If you're looking to upgrade to a Bluechip lifestyle where modernity is the order of the day, this custom-built Metricon masterpiece will certainly pique your interest! Beautifully engineered to an exceptional visual and functional standard, it offers the perfect backdrop to decades of happy memories.

In a well-regarded pocket of Lightview, there's a modern freshness to the surroundings that's reflected in the five-bedroom home itself. Sitting on a sprawling 525 square metre corner block, the eye-catching design of the dual-level home complements the landscaped front yard, which has an automatic watering system.

At the front, a feature porch and doorway entice you in, while at the rear a double lock-up remote garage provides an alternative entry. Once inside, this feature-rich home of

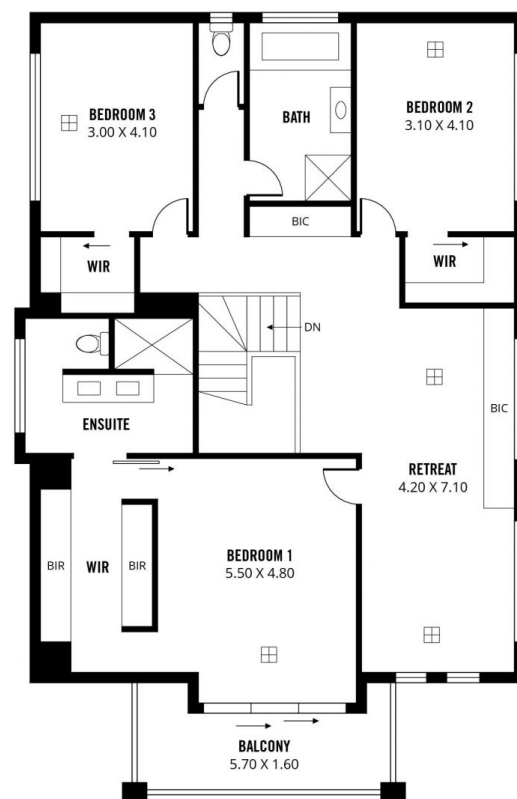
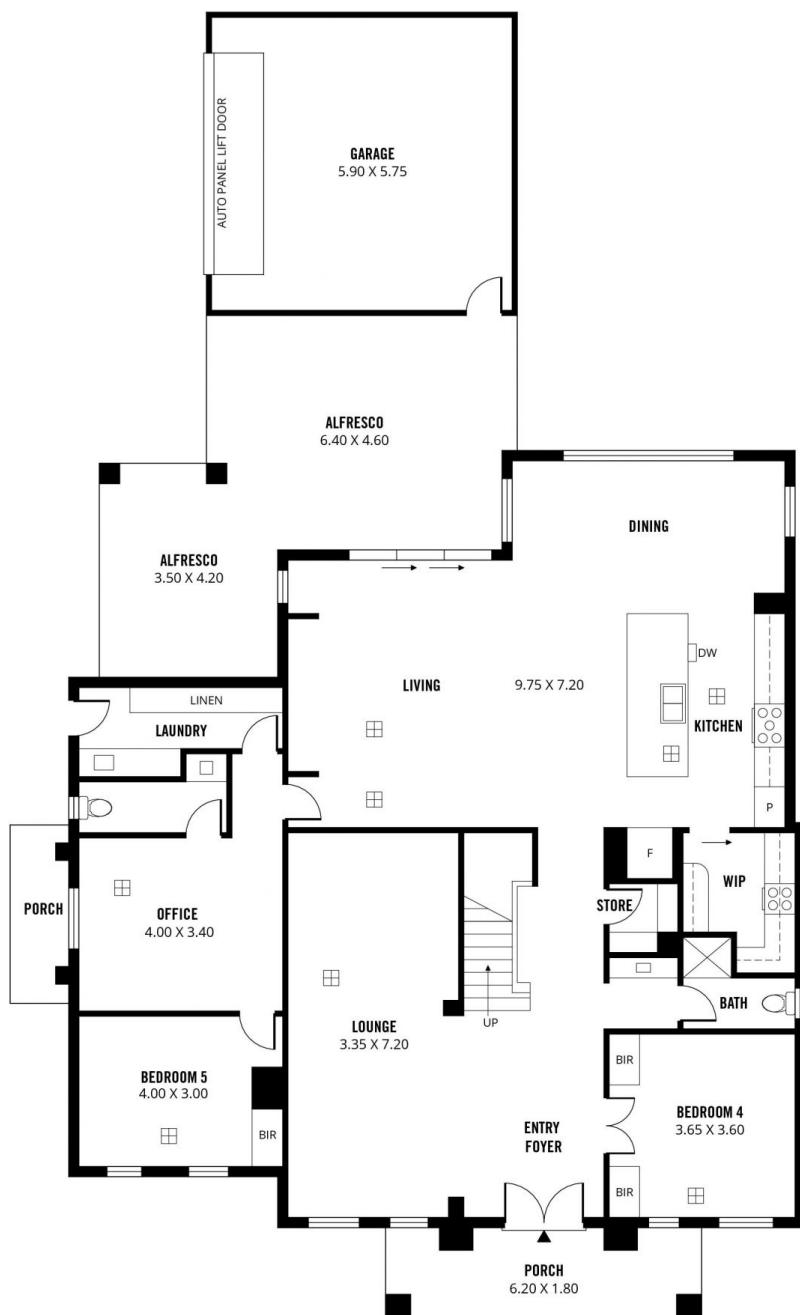
Building Size : 321 sqm
Land Size : 525 sqm
View : <https://www.sinova.com.au/sale/sa/north-north-east-suburbs/lightview/residential/house/7761321>



Jarrod Leow
08 7080 5884

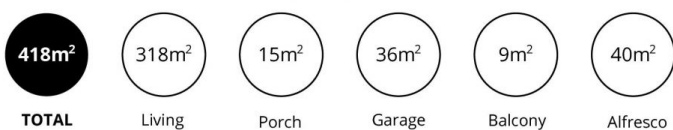


David Deng
08 7080 5884



LOWER LEVEL

UPPER LEVEL



Scale in metres. This drawing is for illustration purposes only. All measurements are approximate and details intended to be relied upon should be independently verified.

Produced by **The Fotobase Group**

