

36D Glenburnie Terrace Plympton SA

4 🛏 3 🚿 2 🚗

Introducing 36D Glenburnie Terrace, Plympton - this townhouse brings a contemporary brilliance to a vibrant, sought-after, and convenient corner of Adelaide. Its impeccable presentation and an impressive array of features and finishes have already captured the attention of investors, young families, and downsizers alike.

Price : \$ 695,000

View : <https://www.sinova.com.au/sale/sa/south-south-east-suburbs/plympton/residential/townhouse/7773414>

What's Available:

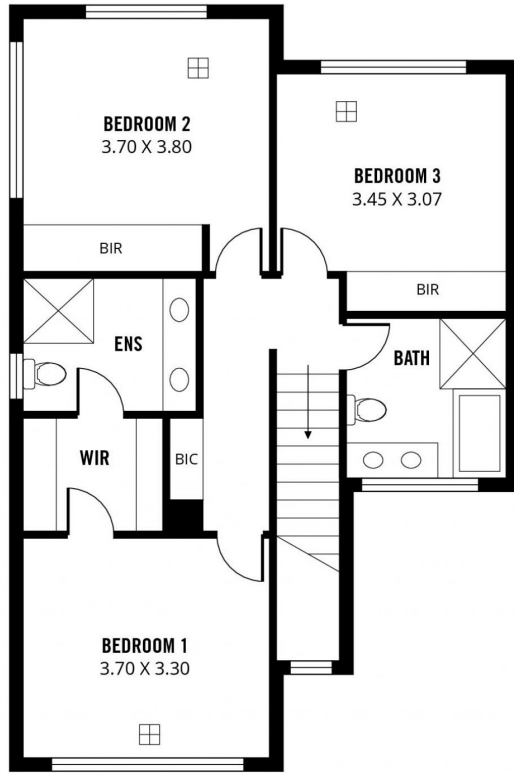
Step into a residence designed with open, flowing floor plans that evoke a sense of spacious luxury. Spanning across two levels, the lower floor is dedicated to an open-plan living concept. The gourmet kitchen takes center stage, seamlessly merging with the living and dining zones, basking in the allure of natural light. Sliding glass doors extend to covered outdoor entertainment spaces, while compact, easy-to-maintain rear yards ensure a true lock-and-leave lifestyle. An additional fourth bedroom and



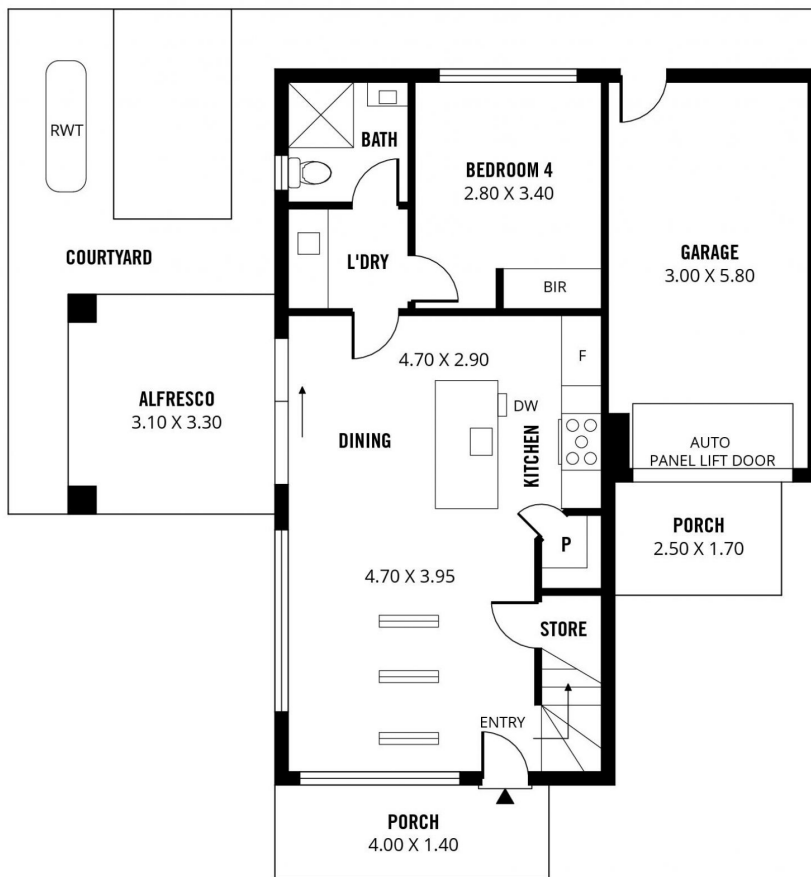
Jarrod Leow
08 7080 5884



Stephen Ong
08 7080 5884



UPPER FLOOR



LOWER FLOOR

