



### 1B Verco Avenue Lower Mitcham SA

4 4 2

Here we have a true masterpiece of modern living - an architecturally designed and custom-built luxury residence completed in 2022. This is a rare gem combining premium design, impeccable craftsmanship, and a desirable location, and we can't wait to show you around!

The tone is set by the dual-level property's breathtaking contemporary façade, visually striking while giving off an air of dependability and comfort. An electric gate provides access past the high, private fence, with a wide driveway leading to the double remote lockup garage. A feature front porch of stone and Western Cedar invites you to experience the wonders within.

Inside, 3-metre ceilings create an immediate feeling of spaciousness, while the timber flooring is warm and welcoming. There is an abundance of exceptional features,

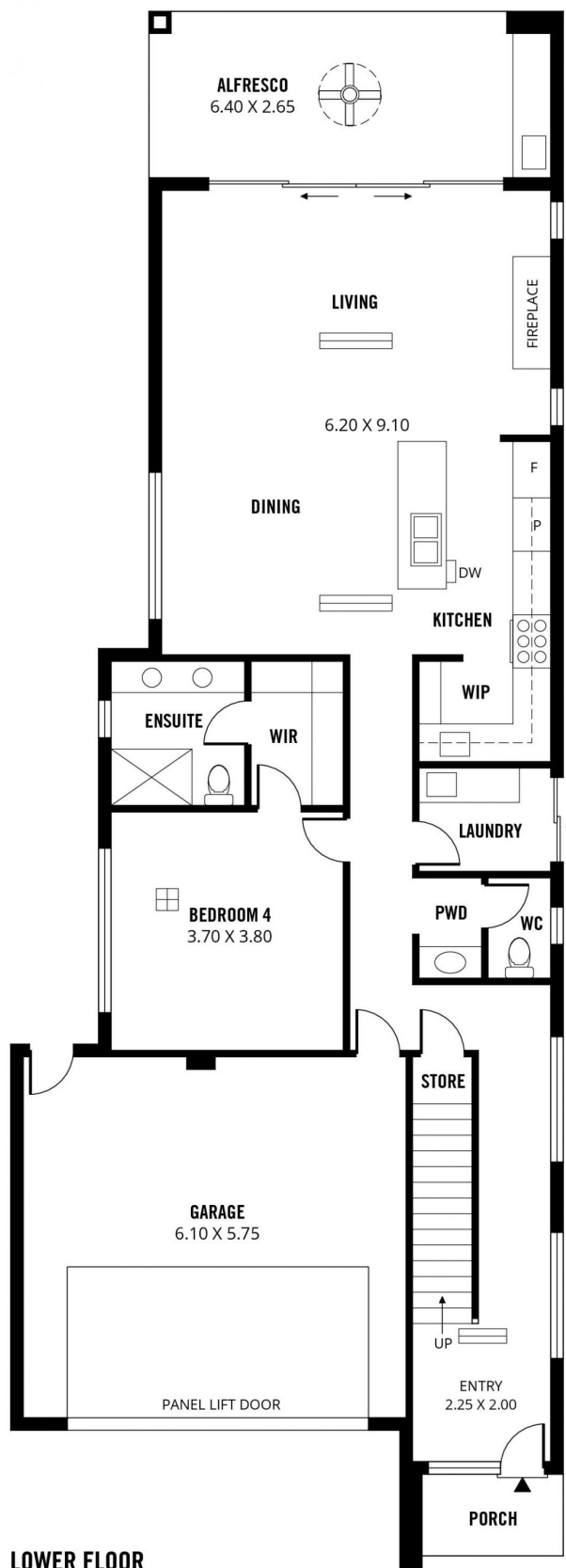
**Land Size** : 425 sqm  
**View** : <https://www.sinova.com.au/sale/sa/south-south-east-suburbs/lower-mitcham/residential/house/7799123>



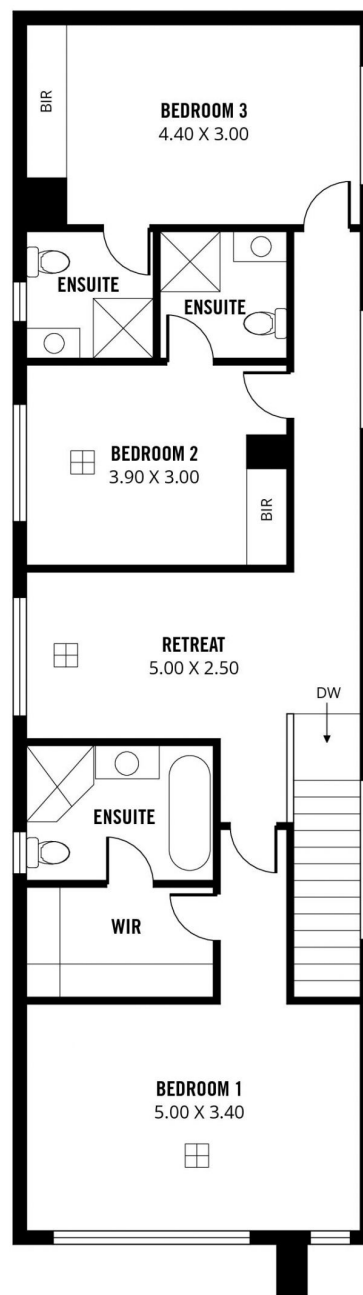
**Jarrod Leow**  
08 7080 5884



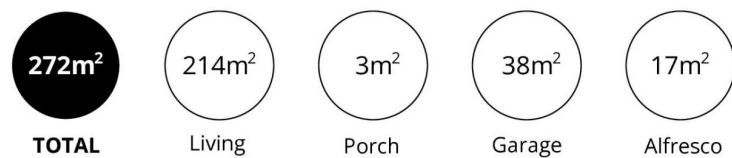
**Stephen Ong**  
08 7080 5884



**LOWER FLOOR**



**UPPER FLOOR**



Scale in metres. This drawing is for illustration purposes only. All measurements are approximate and details intended to be relied upon should be independently verified.

Produced by **The Fotobase Group**