



21A Hallett Road Erindale SA

4 3 2

Introducing a premier luxury residence at 21A Hallett Road, Erindale, where elegance and sophistication are taken to unprecedented heights. These newly constructed Torrens Title 4-bedroom homes are a testament to contemporary living at its finest, nestled in one of Adelaide's most exclusive neighborhoods. The front facade showcases an exquisite combination of premium stone tile cladding and modern wooden finishes, setting the stage for the exceptional interiors. Welcoming you is a double garage, providing both an elegant entrance and ample parking.

Upon entering, prepare to be enchanted by a grand foyer boasting a 3.6m high ceiling adorned with a designer crystal chandelier. Herringbone floorboards flow seamlessly through the hallway, dining, living, and kitchen areas. The front guest bedroom, complete with its own built-in robe and ensuite, features double glass doors

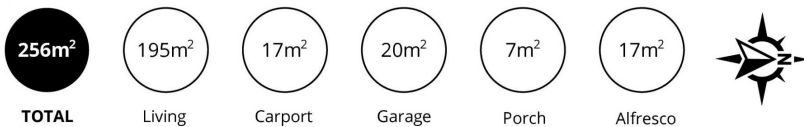
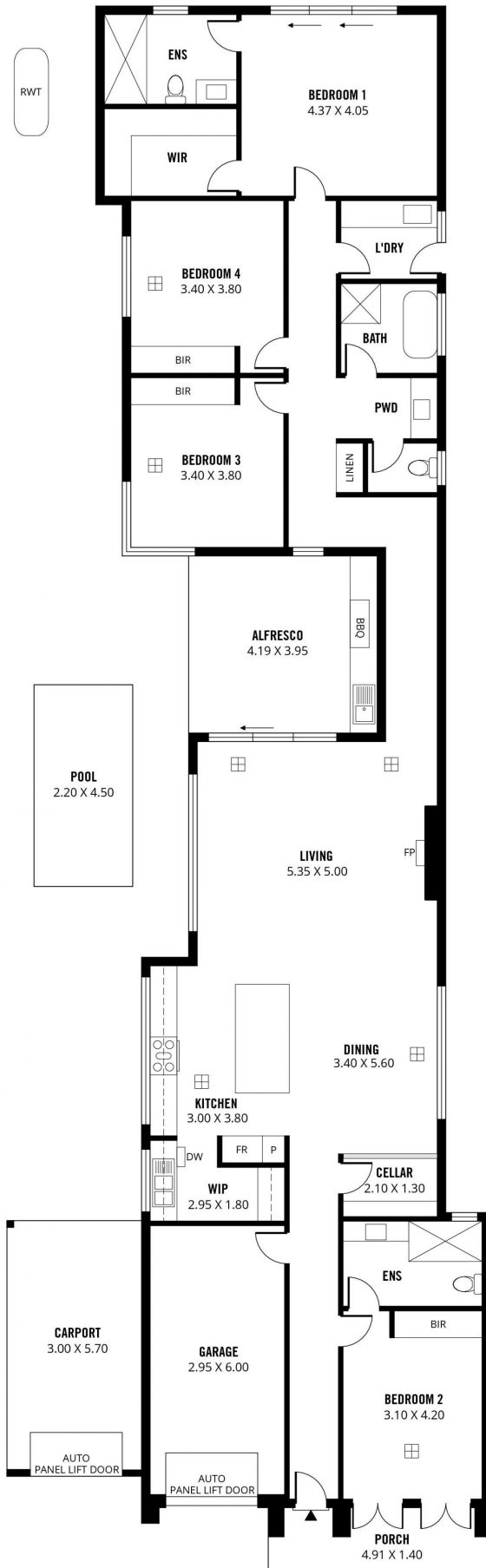
Price : UNDER OFFER
Land Size : 495 sqm
View : <https://www.sinova.com.au/sale/sa/eastern-suburbs/erindale/residential/house/7811829>



Stephen Ong
08 7080 5884



Jarrod Leow
08 7080 5884



Scale in metres. This drawing is for illustration purposes only. All measurements are approximate and details intended to be relied upon should be independently verified.

Produced by The Fotobase Group