



14 Lower Portrush Road Marden SA

14 

- Zoned Suburban Activity Centre
- Onsite parking for up to 14 vehicles
- Offered with vacant possession

Price : LEASED pa
Building Size : 153 sqm
View : <https://www.sinova.com.au/lease/sa/eas-tern-suburbs/marden/commercial/retail/7870936>

This exceptional commercial and retail opportunity is located at 14 Lower Portrush Road, Marden, boasting a high-profile position directly opposite Marden Shopping Centre.

With a generous 153sqm* of flexible building area, this property provides versatile space ideal for occupiers aiming to establish their business in the popular inner-eastern suburb of Marden. Investors will also find appeal in its prominent location, offering strategically positioned assets with strong exposure and ample parking space.

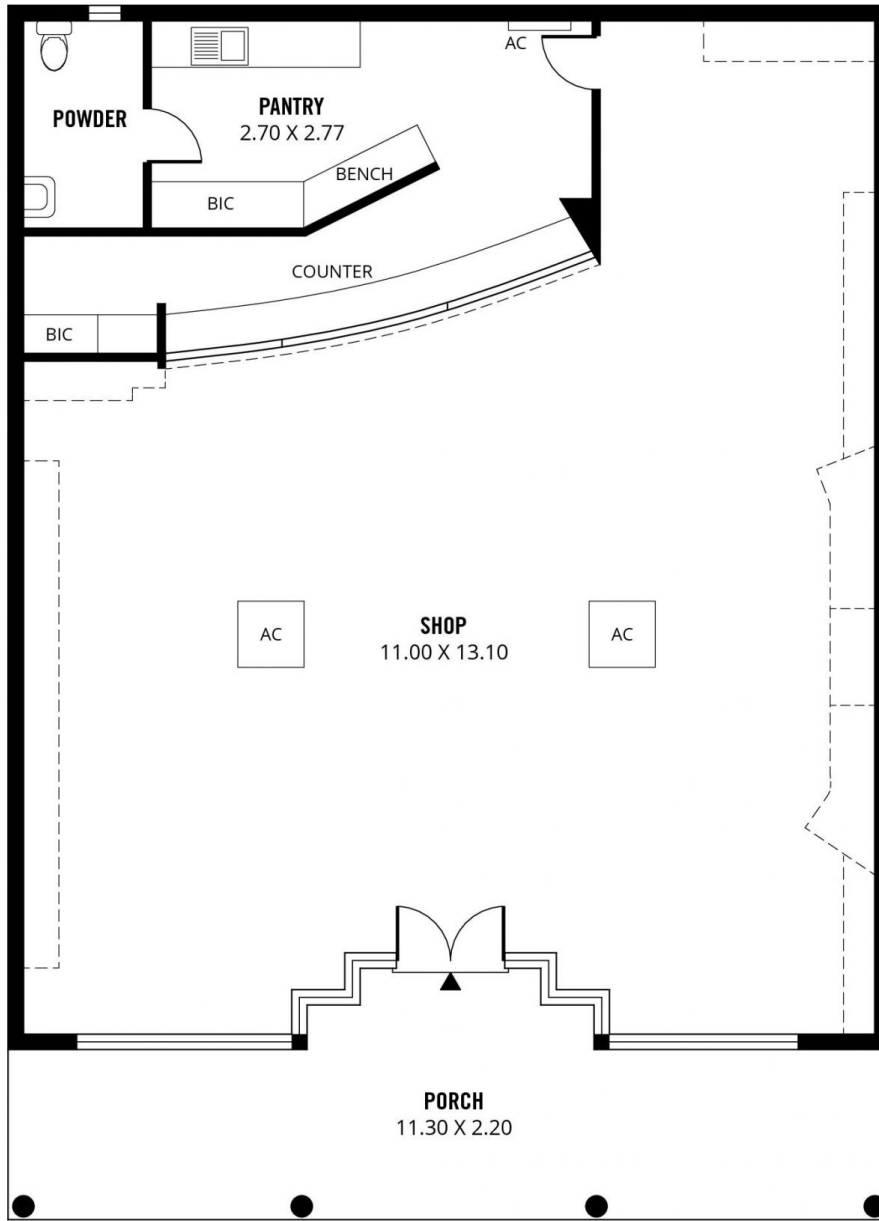
Situated on a single Certificate of Title, the site features



Jarrod Leow
08 7080 5884



Stephen Ong
08 7080 5884



179m²

TOTAL

151m²

Shop

28m²

Porch



Scale in metres. This drawing is for illustration purposes only. All measurements are approximate and details intended to be relied upon should be independently verified.

Produced by **The Fotobase Group**