



### 20C Byron Avenue Clovelly Park SA

3 1 2

Nestled in the charming neighbourhood of Clovelly Park, 20C Byron Avenue offers a perfect blend of comfort and convenience, making it an ideal choice for young executives and savvy investors alike. As you step inside, you are greeted by a spacious lounge room adorned with beautiful floating floors, creating an inviting atmosphere for relaxation and entertainment. The gourmet kitchen boasts stainless steel cooking appliances, a dishwasher, ample bench and cupboard space, and a convenient breakfast bar, catering to the needs of modern living.

Adding to the appeal of this residence, downstairs features a separate laundry and a second toilet for added convenience. The allure continues outdoors with a private courtyard garden, complete with a stunning pergola and timber decking, providing a picturesque setting for outdoor gatherings and outdoor dining. Enhanced with outdoor cafe

**Price** : \$ 705,000

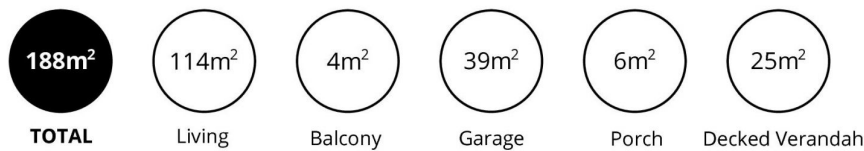
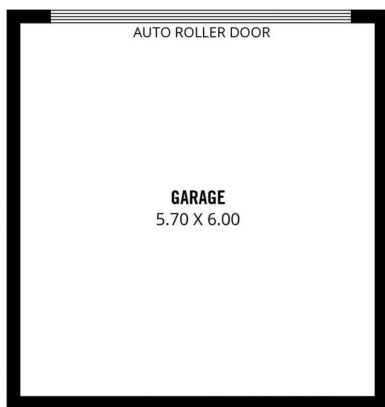
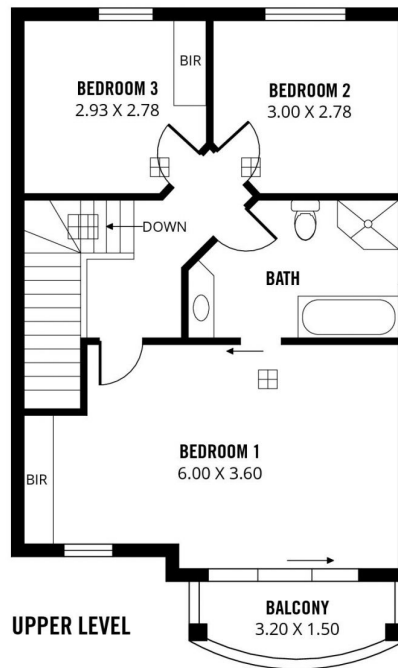
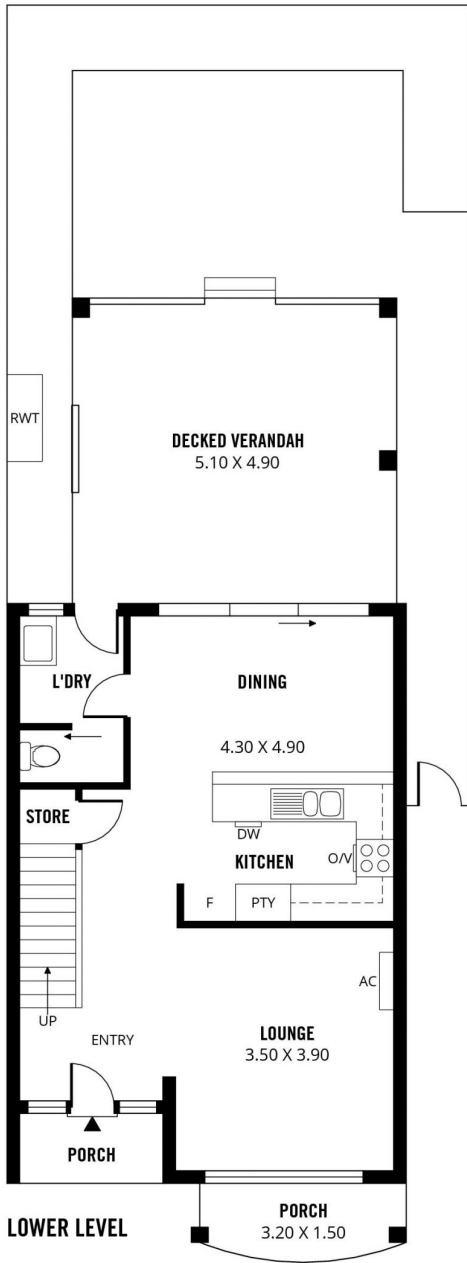
**View** : <https://www.sinova.com.au/sale/sa/south-south-east-suburbs/clovelly-park/residential/townhouse/7915164>



**Jarrod Leow**  
08 7080 5884



**David Deng**  
08 7080 5884



Scale in metres. This drawing is for illustration purposes only. All measurements are approximate and details intended to be relied upon should be independently verified.

Produced by **The Fotobase Group**