



35A & 35B Coorara Avenue Payneham South SA

4 3 2

Introducing 35A and 35B Coorara Avenue, Payneham South - two exquisite new residences embodying modern luxury living in Adelaide's dynamic locale. With impeccable design and a host of amenities, these homes have captivated the interest of investors, families, and downsizers alike.

As you step through the inviting wooden door, you're greeted by a inviting lofty 3m ceiling height entrance area. Adjacent to it lies one of the master bedrooms, complete with its own lux ensuite, spacious walk in robe and floor to ceiling double glazed glass window. Moving through the lower level, you'll find an open-plan design centered around a gourmet kitchen. Enhanced by a walk-in pantry and an island breakfast bench adorned with wooden accents, the kitchen seamlessly merges with the living and dining spaces, illuminated by ample natural light. Sliding glass

Price : \$1.45m

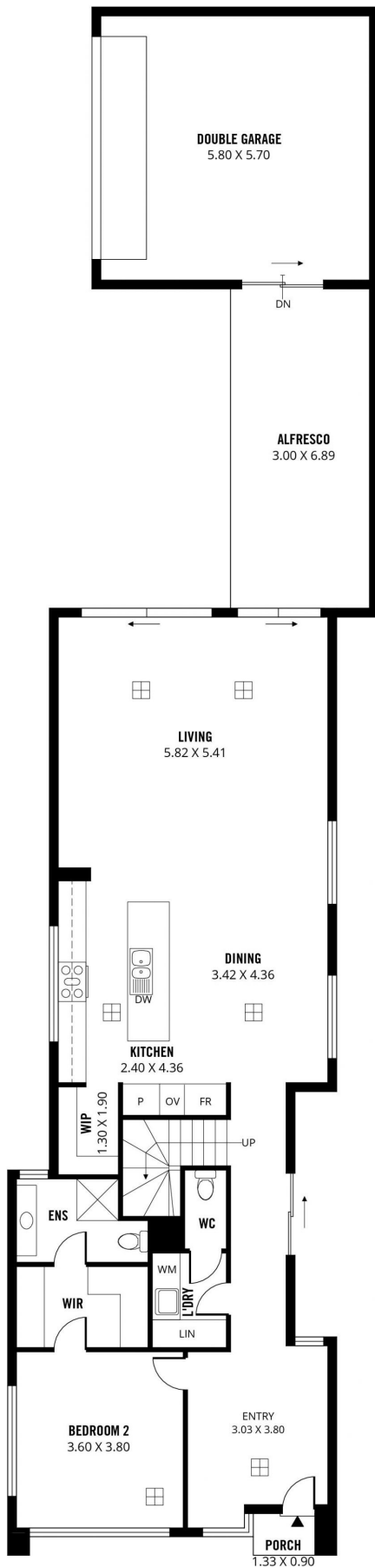
View : <https://www.sinova.com.au/sale/sa/eastern-suburbs/payneham-south/residential/house/7981781>



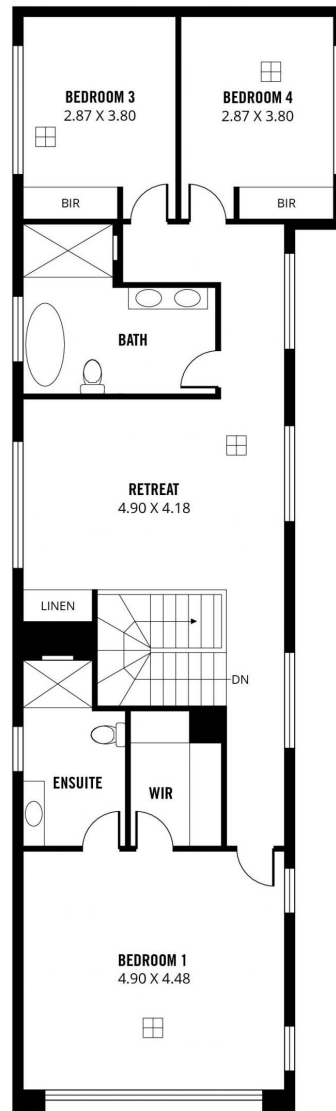
Stephen Ong
08 7080 5884



Jarrod Leow
08 7080 5884



GROUND FLOOR PLAN



FIRST FLOOR PLAN

