



22A Gothic Avenue Stonyfell SA

4 2 2

Nestled in the prestigious enclave of Stonyfell, 22A Gothic Avenue exudes timeless charm and modern elegance. From its freshly painted exterior to its meticulously landscaped grounds, this property presents an inviting sanctuary for discerning buyers seeking both luxury and comfort.

Step inside and be greeted by a wide hallway adorned with exquisite detailing, leading past a private study perfect for quiet contemplation. On the lower level, discover a seamlessly flowing layout, with a separate lounge and formal dining area ideal for entertaining guests. The heart of the home unfolds into an expansive open-plan kitchen, living, and dining area, effortlessly merging indoor and outdoor living spaces.

The modern kitchen boasts stainless steel appliances,

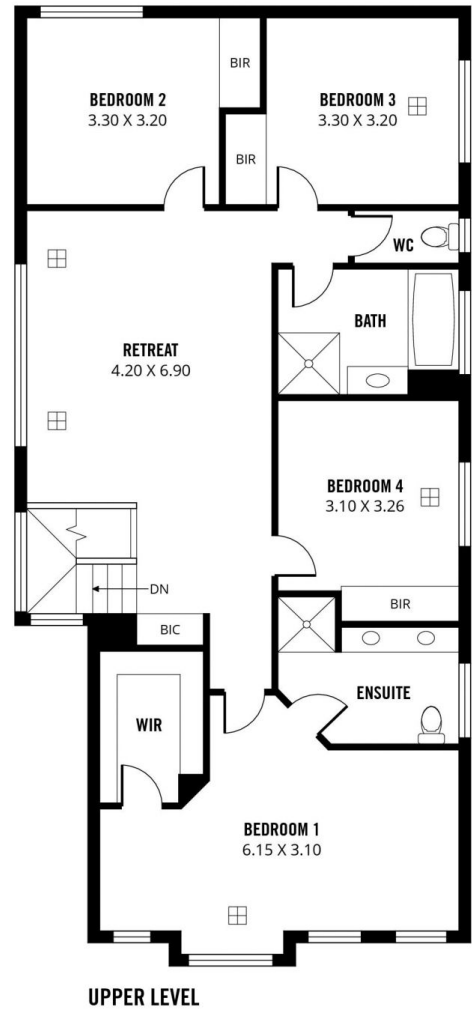
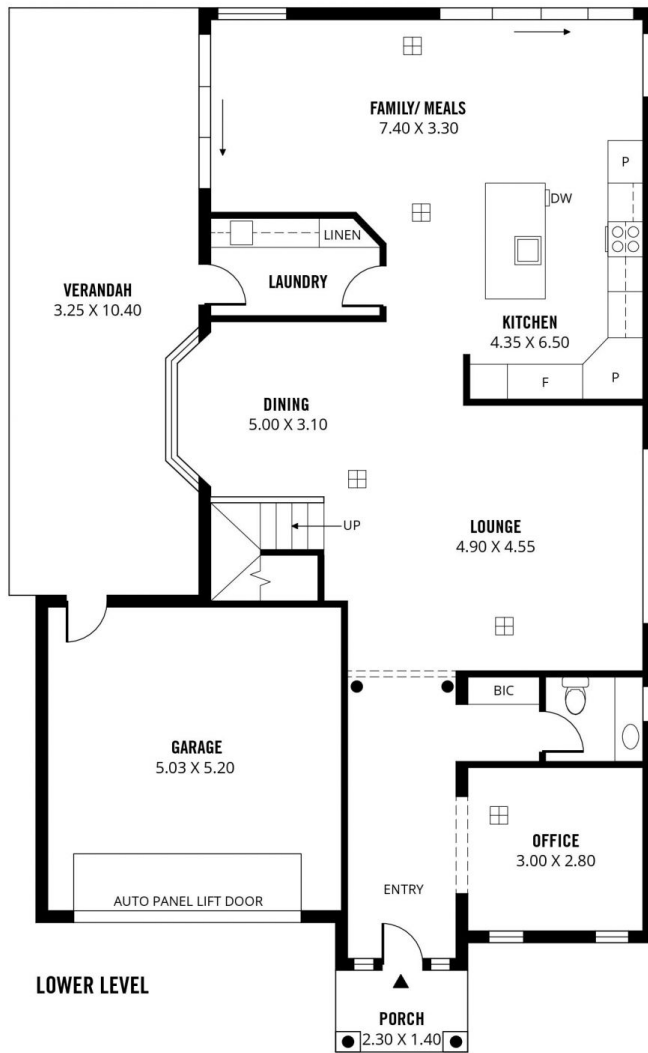
Price : \$ 1,423,000
Land Size : 522.9 sqm
View : <https://www.sinova.com.au/sale/sa/eastern-suburbs/stonyfell/residential/house/7987323>



Jarrod Leow
08 7080 5884



Stephen Ong
08 7080 5884



Scale in metres. This drawing is for illustration purposes only. All measurements are approximate and details intended to be relied upon should be independently verified.

Produced by **The Fotobase Group**