



23-27 Ross Road Hectorville SA

3 2 2

Ten brand new contemporary designed townhouses with various layouts are nestled in the highly sought-after suburb of Hectorville. Offering brand new homes with flexible multi-floorplan options, owners can choose between double-storey townhouses with single or double garages.

Situated in a vibrant lifestyle locale, these exquisite residences are within close proximity to essential amenities. Each home boasts a modern kitchen equipped with Westinghouse appliances, complemented by a stylish stonotop breakfast bar separating the living area. The contemporary bedrooms are bathed in natural light, while the lower levels feature expansive open-plan spaces seamlessly integrating kitchen, living, and dining areas. Outdoor entertainment is a delight with alfresco areas, and upstairs activity rooms provide additional flexibility.

Price : Contact Agent

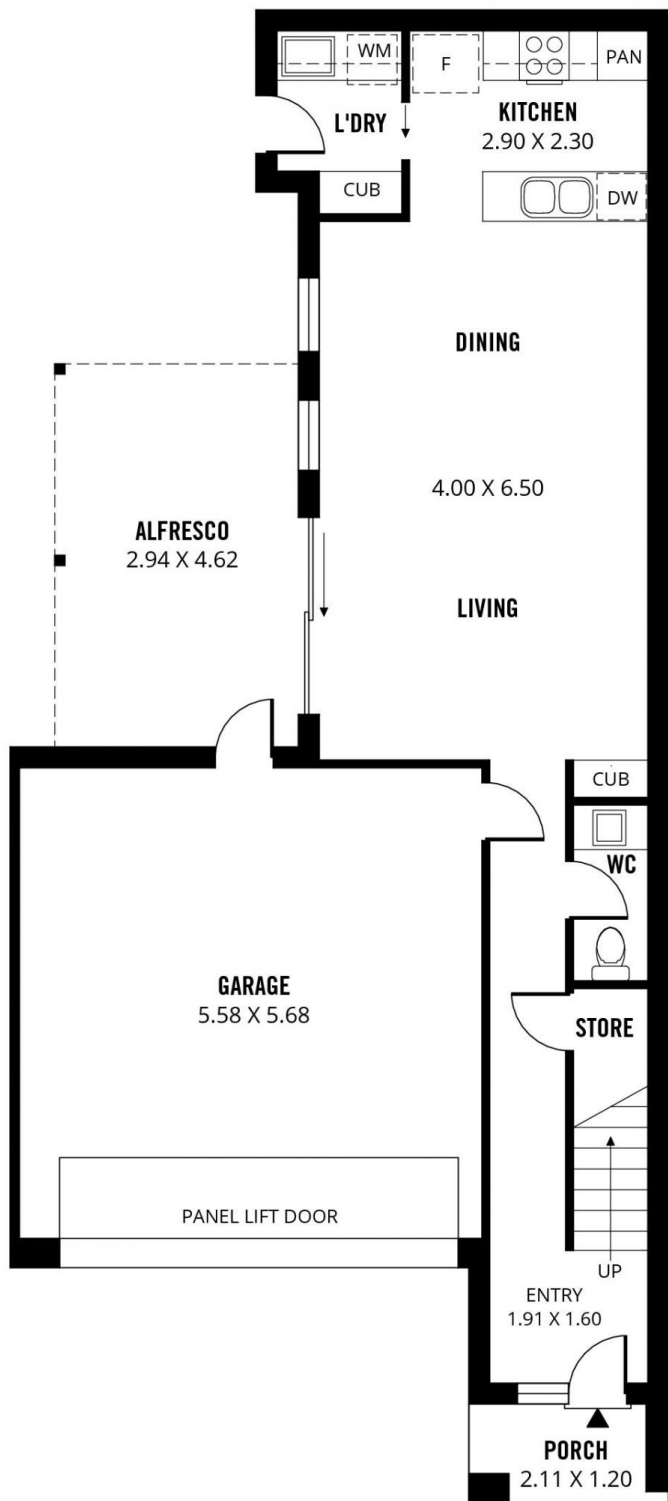
View : <https://www.sinova.com.au/sale/sa/eastern-suburbs/hectorville/residential/townhouse/7996126>



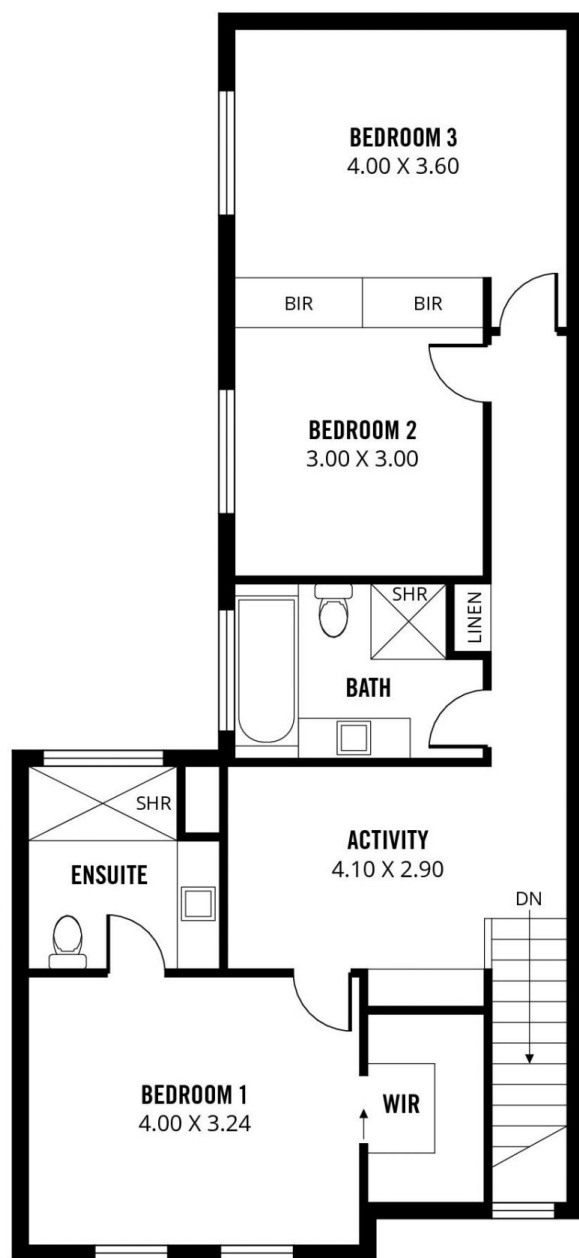
Stephen Ong
08 7080 5884



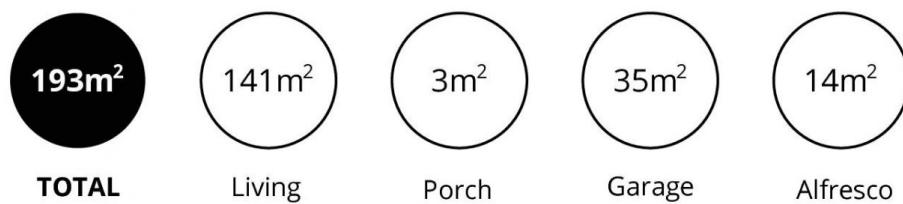
David Deng
08 7080 5884



GROUND FLOOR

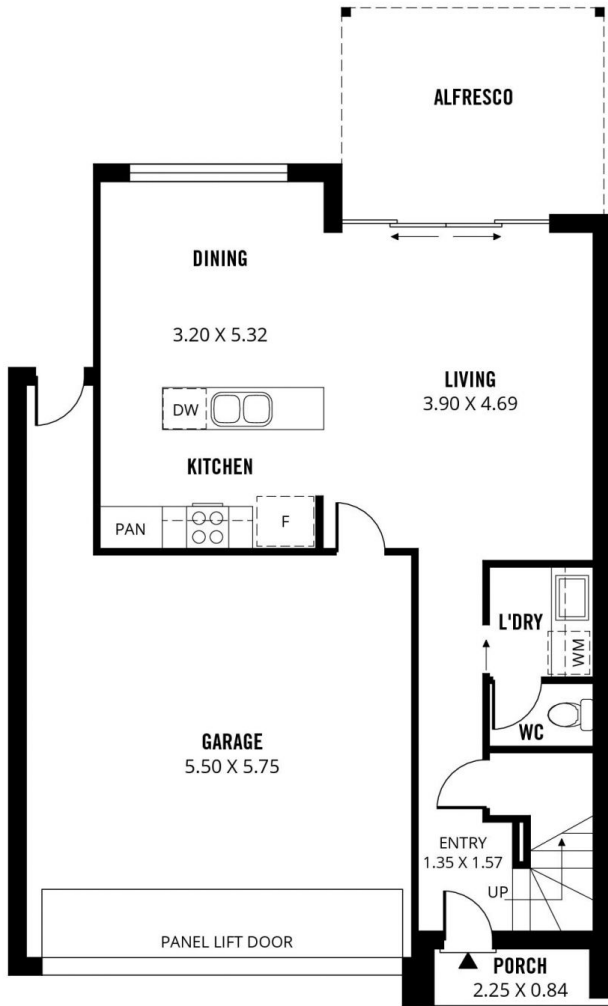


UPPER FLOOR

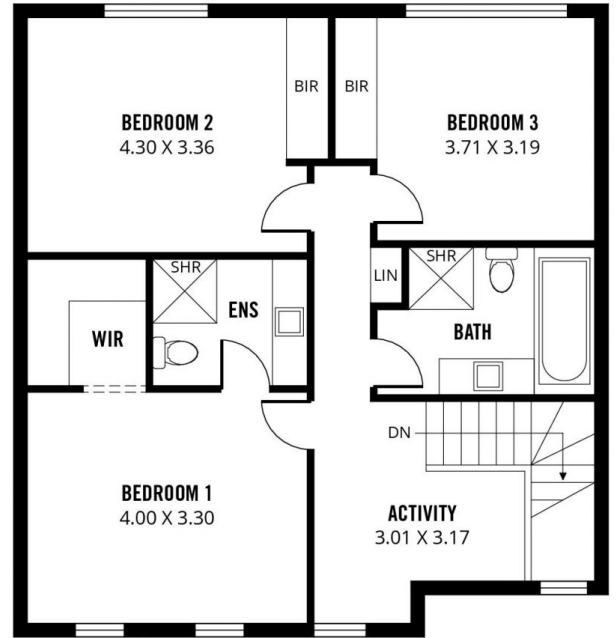


Scale in metres. This drawing is for illustration purposes only. All measurements are approximate and details intended to be relied upon should be independently verified.

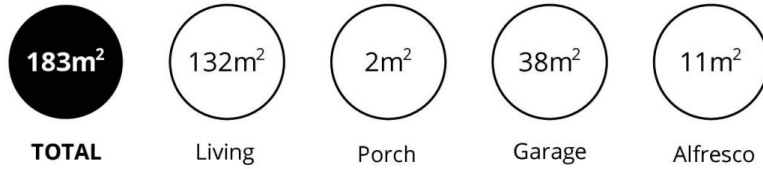
Produced by **The Fotobase Group**



GROUND FLOOR



UPPER FLOOR



Scale in metres. This drawing is for illustration purposes only. All measurements are approximate and details intended to be relied upon should be independently verified.

Produced by **The Fotobase Group**