



## 21 Hallett Road Erindale SA

4 3 2

Introducing an unparalleled luxury abode at 21 Hallett Road Erindale, where elegance and sophistication reach unprecedented levels. These newly built Torrens Title 4-bedroom residences epitomize contemporary living at its finest, nestled in one of Adelaide's most exclusive neighborhoods. The front facade showcases a seamless blend of premium stone tile cladding and modern wooden finishes, setting the stage for the luxurious interiors. A double garage offers a stylish entrance and ample parking.

Upon entering, prepare to be captivated by a majestic foyer boasting a 3.6m high ceiling adorned with a designer crystal chandelier. Herringbone floorboards gracefully traverse the hallway, dining, living, and kitchen spaces. The front guest bedroom, complete with its own built-in robe and ensuite, features double glass doors leading to the front porch, seamlessly integrating indoor and outdoor

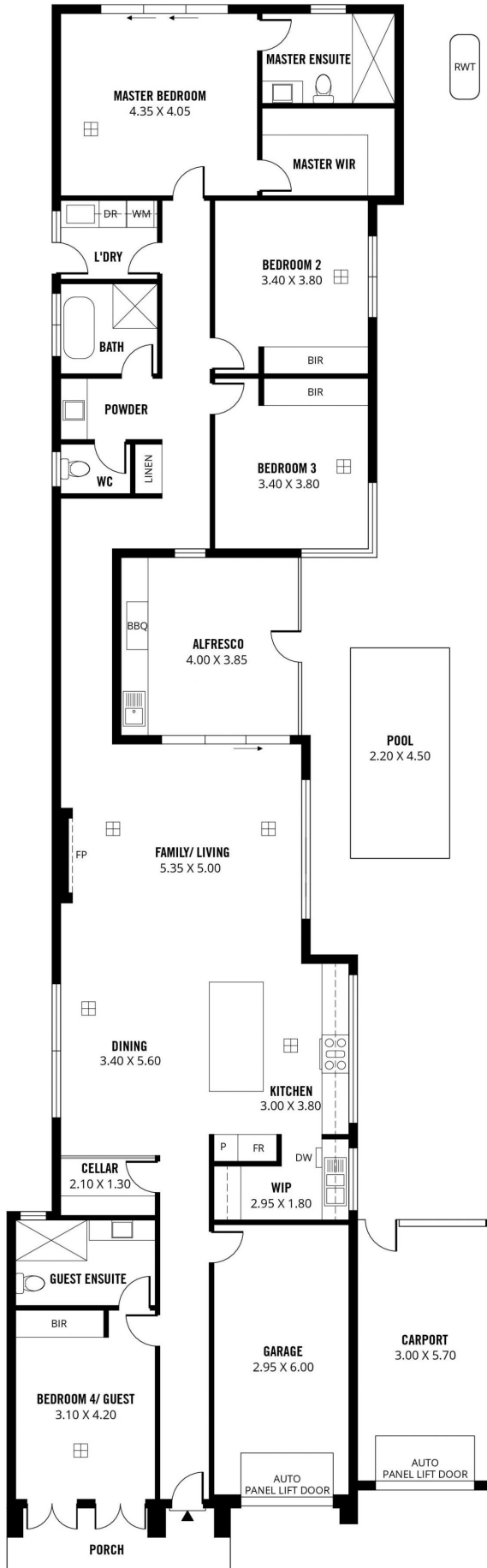
**Price** : Best Offer by 28th May, 2pm  
**Land Size** : 495 sqm  
**View** : <https://www.sinova.com.au/sale/sa/eastern-suburbs/erindale/residential/house/8000479>



**Stephen Ong**  
08 7080 5884



**Felix Chu**  
08 7080 5884



RWT

**256m<sup>2</sup>**

**TOTAL**

195m<sup>2</sup>

Living

17m<sup>2</sup>

Carport

20m<sup>2</sup>

Garage

7m<sup>2</sup>

Porch

17m<sup>2</sup>

Terrace



Scale in metres. This drawing is for illustration purposes only. All measurements are approximate and details intended to be relied upon should be independently verified.

Produced by **The Fotobase Group**