



## 16 Gilles Road Glen Osmond SA

5 🚗 4 🚗 2 🚗

Prepare yourself for a masterclass in modern architecture and genre-spanning construction. A jaw-dropping tribute to luxurious living, a conscientious endeavour in design that tests the uppermost boundaries of opulence. Prepare yourself for 16 Gilles Road. Sitting in a sought-after enclave of Glen Osmond, the harmonious combustion of sophistication, style and panache represents the future of high-end real estate. Welcome to the new benchmark - welcome to Sinova's latest listing.

Arriving at the sprawling approx. 660sqm property, the bold two-level façade towers above you, breathtaking in its French Provincial aesthetic. The attention to detail found throughout the 424sqm approx. build is immediately evident in the immaculate landscaped front yard. What will

**Type** : House  
**Land Size** : 660 sqm  
**View** : <https://www.sinova.com.au/sale/sa/eastern-suburbs/glen-osmond/residential/house/8007821>



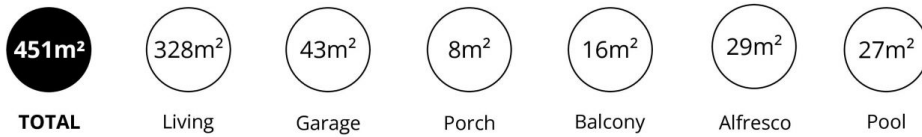
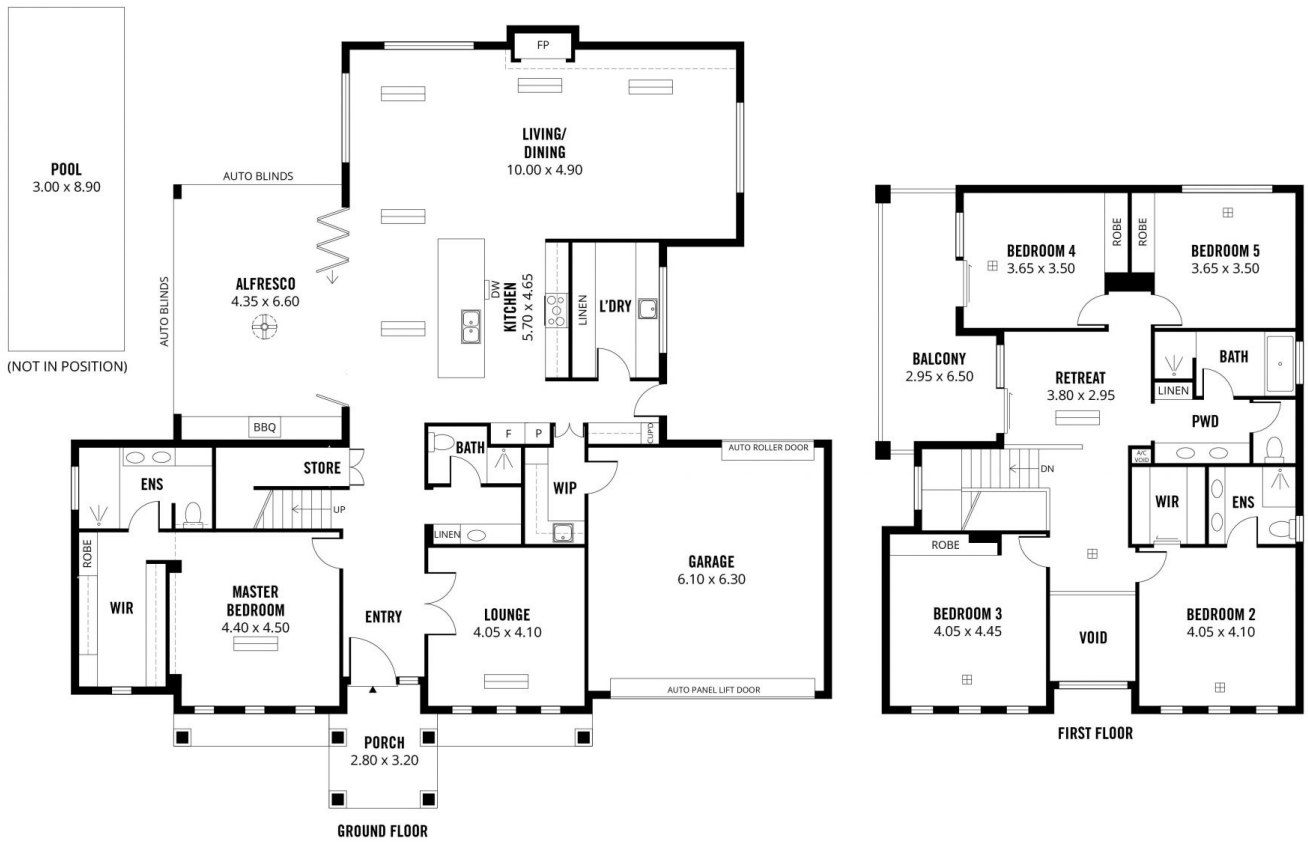
**Jarrod Leow**  
08 7080 5884



**Stephen Ong**  
08 7080 5884

[For full version visit the website](https://www.sinova.com.au)

<https://www.sinova.com.au>



Scale in metres. This drawing is for illustration purposes only. All measurements are approximate and details intended to be relied upon should be independently verified.

Produced by **The Fotobase Group**