



46 Pridmore Road Glen Osmond SA

Marrying exquisite grandeur with unparalleled contemporary design, this masterpiece of a property exudes style, charm, and an unrelenting commitment to liveable luxury. This is a home that will not fail to exceed the loftiest of expectations, capturing the hearts of all who enter. Combined with a prestigious, sought-after location, this is a must see for lovers of elite real estate and progressive architecture. In short, this home will blow you away.

Sitting behind a secure, steel fence with video intercom controlled electric gates to the exposed aggregate driveway and front path, the bold façade is a statement-making indication of the magnificent features you'll find throughout the home. Towering, stone clad piers frame the front porch,

[For full version visit the website](https://www.sinova.com.au)

5 🏠 4 🚗 2 🚘

Type : House
Land Size : 654 sqm
View : <https://www.sinova.com.au/sale/sa/eastern-suburbs/glen-osmond/residential/house/8054409>



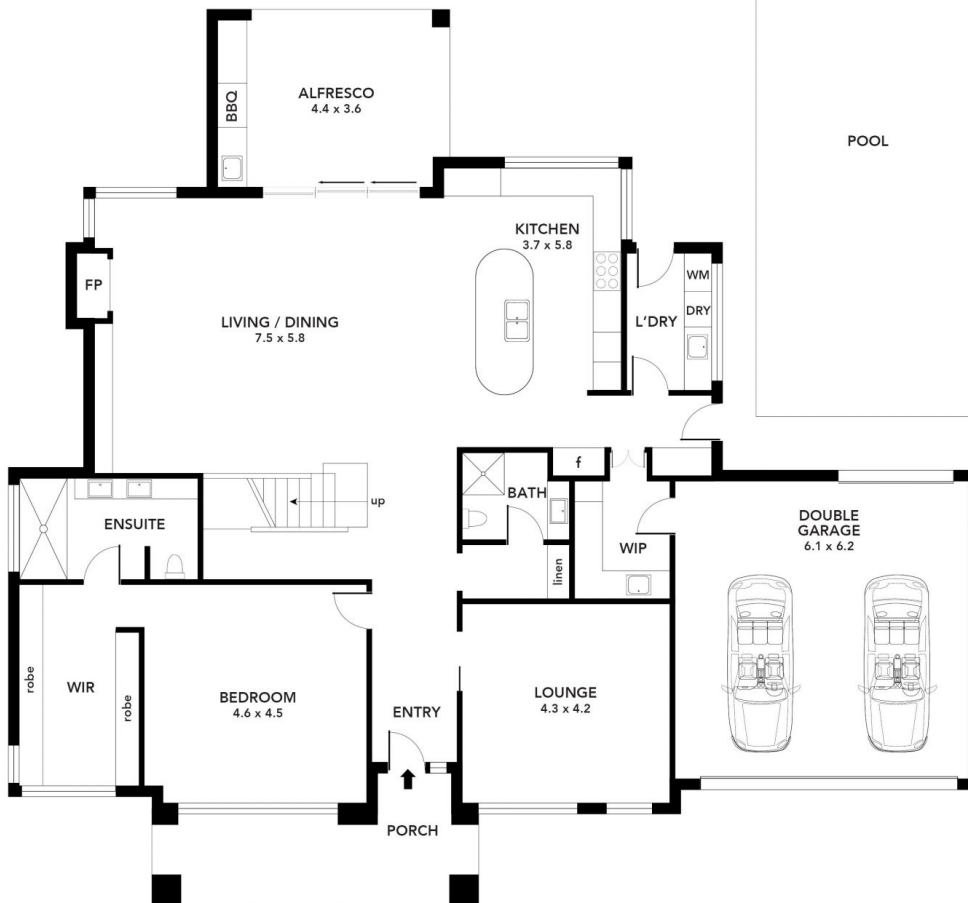
Jarrod Leow
08 7080 5884



Stephen Ong
08 7080 5884



UPPER FLOOR



GROUND FLOOR

299.1 m ²	41.5 m ²	13.7 m ²	17.8 m ²	18.5 m ²	390.6 m ²
LIVING	GARAGE	PORCH	ALFRESCO	BALCONY	TOTAL