



20 Taminga Avenue Glenunga SA

4 🏠 2 🚗 2 🚗

Nestled in the prestigious heart of Glenunga, this architecturally refined four-bedroom residence is a triumph of contemporary design, offering an exceptional blend of sophistication, privacy, and effortless indoor-outdoor living. Thoughtfully curated to maximise both space and natural light, this home is a true entertainer's dream.

An wide entrance with expansive front double doors to both generously proportioned living areas spill onto a sunlit courtyard, fully embracing the northern orientation to create an inviting, light-filled sanctuary. Bifold doors in the living room further dissolve the boundaries between inside and out, allowing fresh breezes and garden views to become a daily luxury.

Type : House
Price : Contact Agent
Land Size : 715 sqm
View : <https://www.sinova.com.au/sale/sa/eastern-suburbs/glenunga/residential/house/8255204>



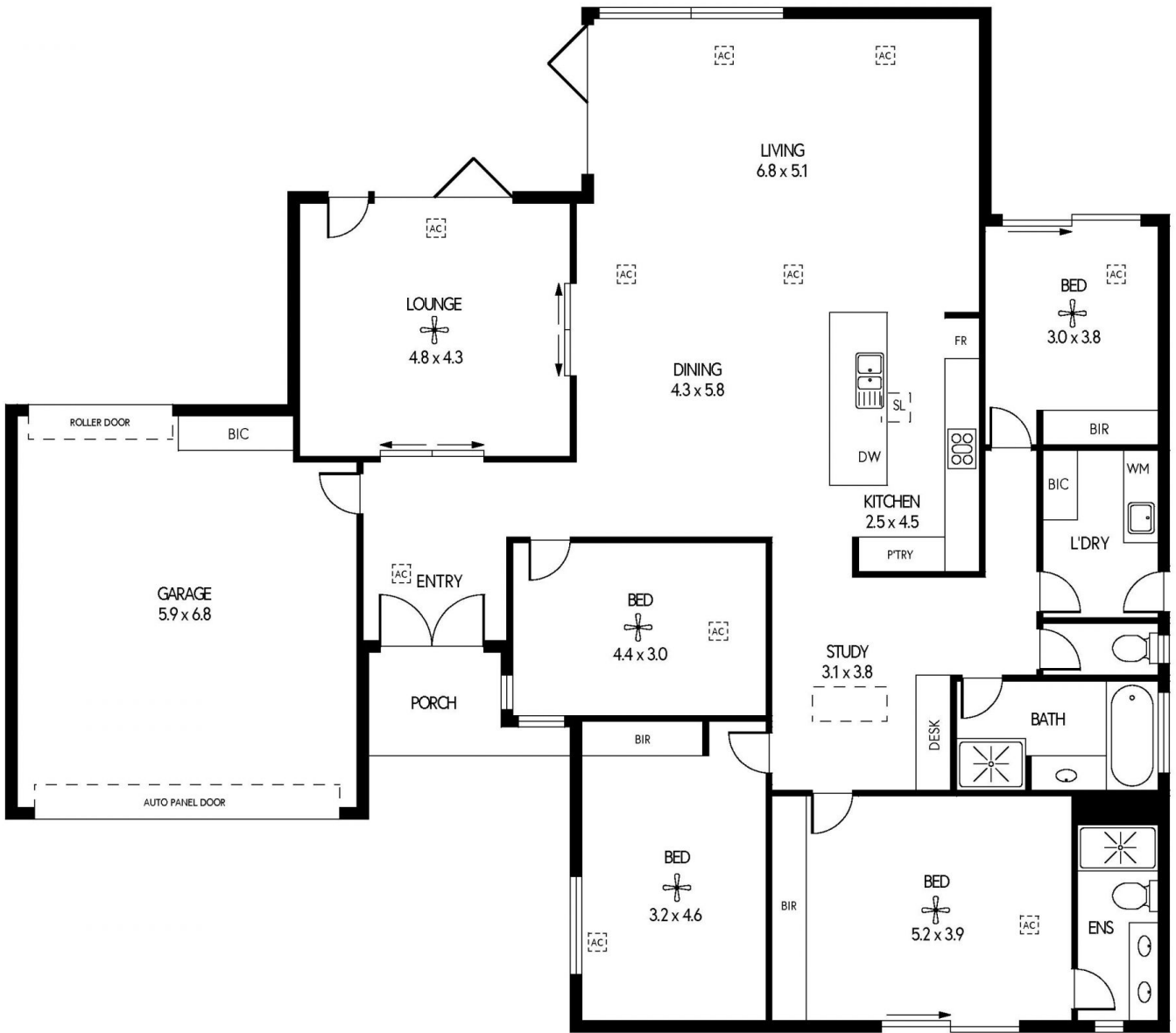
Stephen Ong
08 7080 5884



David Deng
08 7080 5884

[For full version visit the website](https://www.sinova.com.au)

<https://www.sinova.com.au>



20 TAMINGA AVEUE, GLENUNGA

	INTERNAL	- 253.7 SQM
	EXTERNAL	- 4.7 SQM
	TOTAL	- 258.4 SQM