



21 Simpson Road Wattle Park SA

4 2 1

Perfectly positioned in a peaceful, tree-lined street and overlooking a serene reserve, this beautifully presented Torrens-titled residence offers a superb opportunity to secure refined, low-maintenance living in one of Adelaide's most desirable eastern suburbs.

From the moment you step inside, the sense of space, quality, and comfort is evident. Thoughtfully updated with a focus on timeless design and functionality, the home boasts a flexible and unique floorplan with two spacious living areas-perfect for modern family life, entertaining, or simply relaxing in style.

Set on an easy-care allotment of approximately 420sqm, this single-storey home comprises four well-appointed

[For full version visit the website](https://www.sinova.com.au)

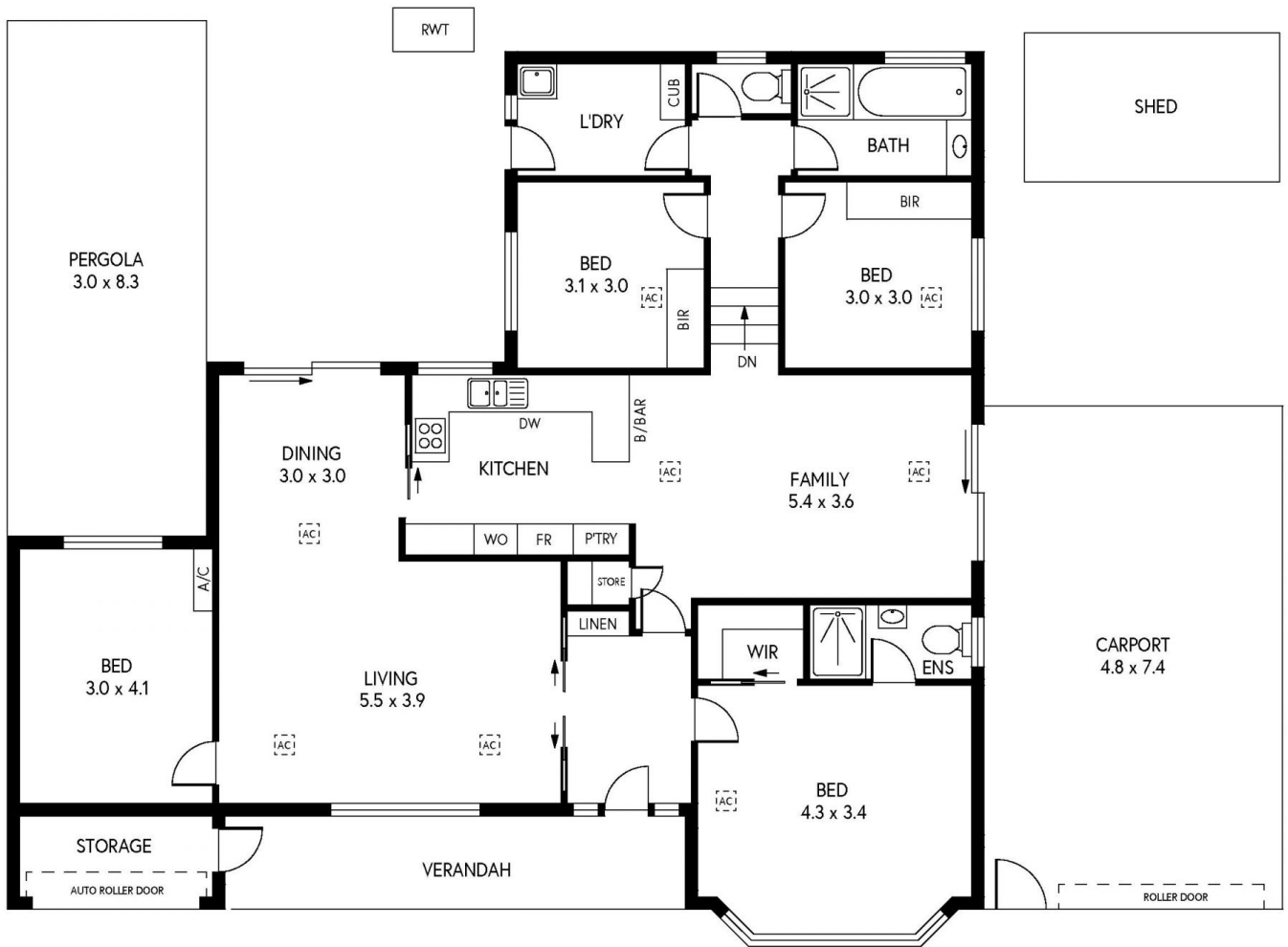
Type : House
Price : \$ 1,200,000
Land Size : 420 sqm
View : <https://www.sinova.com.au/sale/sa/eastern-suburbs/wattle-park/residential/house/8319787>



Stephen Ong
08 7080 5884



David Deng
08 7080 5884



21 SIMPSON ROAD, WATTLE PARK


 INTERNAL - 153.4 SQM
 EXTERNAL - 85.4 SQM
 TOTAL - 238.8 SQM